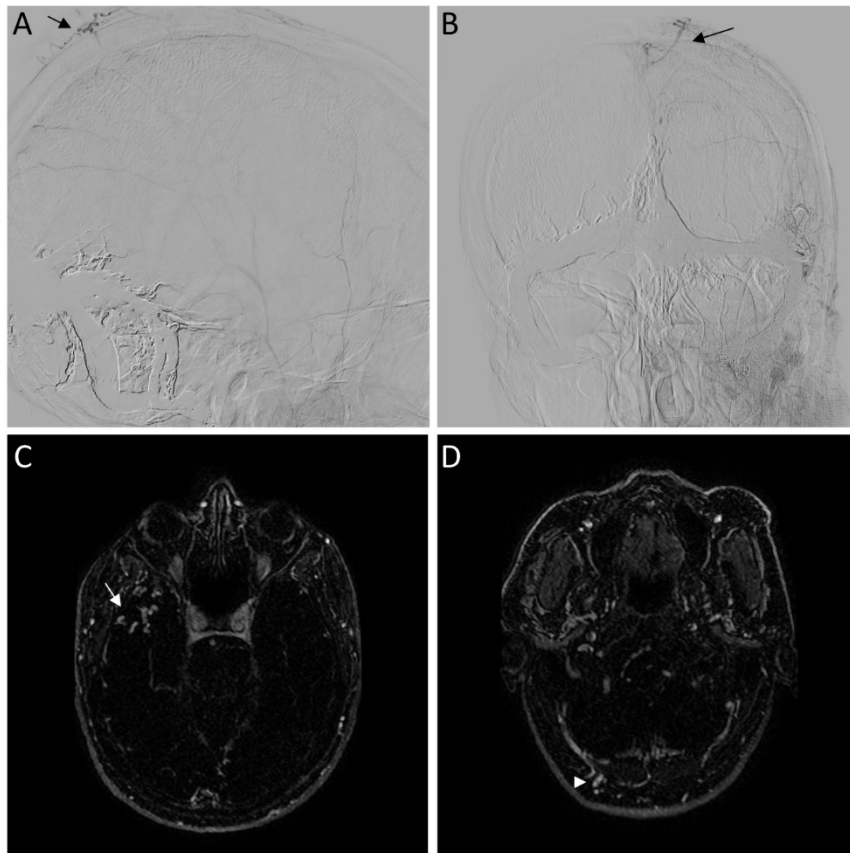


Appendix 2 (as submitted by the authors): Supplementary Figure 2



Repeat conventional and magnetic resonance (MR) angiography at 2-year follow-up showing collateral venous drainage and a new small nonaggressive dural arteriovenous fistula. (A) Anteroposterior and (B) lateral angiograms at 2-year follow-up showing the fistula in the region of the superior sagittal sinus (black arrow). (C–D) Axial MR angiography showing prominent collaterals in the right middle cranial fossa (white arrow) and right transverse sinus (white arrowhead) regions.