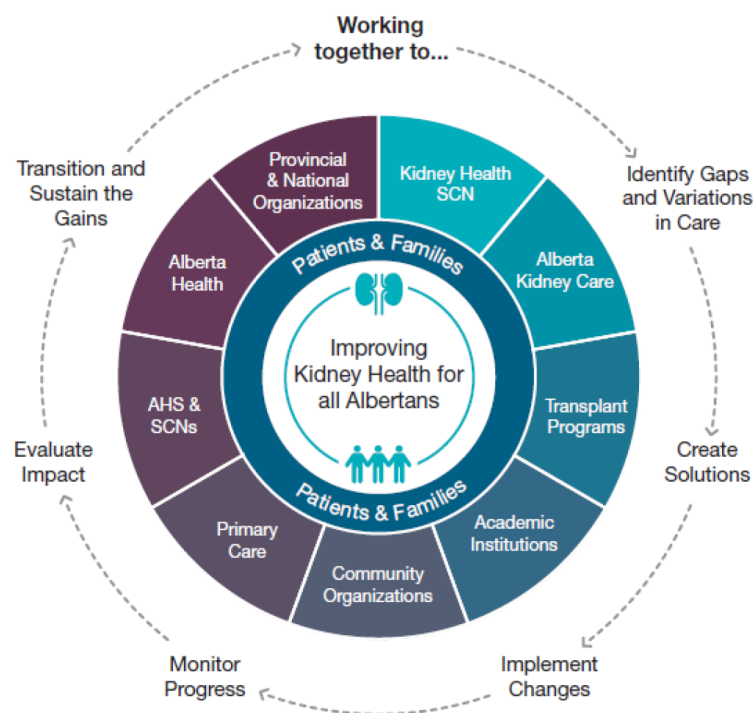


Working together to improve kidney health

The Kidney Health Strategic Clinical Network (KHSCN) and Alberta Kidney Care (responsible for delivery of kidney care), together with many partners and stakeholders, comprise the collective kidney community.

Over the next four years, we'll use the TRM as our guide to continue to work with the kidney community to improve the quality of care and outcomes for patients and their families.



“From a Patient Advisor’s perspective I am quite pleased with the progress we have made, the projects we have completed and most of all the high quality of collaborative patient engagement that has been the hallmark of the KHSCN from its inception. That being said, we will still have a multitude of problems to address, barriers to bust and challenges to overcome, thankfully it’s a talented team.

– Phil Bobawsky, Patient Advisor

The Issues



450,000
Albertans have Chronic Kidney Disease



1 in 12 survivors of Acute Kidney Injury need to start chronic dialysis after hospital discharge



4,500 Albertans with End-Stage Kidney Disease require renal replacement therapy



\$14,643 - \$100,000 per patient
Annual costs of care for people with chronic kidney disease

\$1,400 - \$2,500 per year
Out-of-pocket costs for patients starting dialysis

Our Plan

This Transformational Roadmap (TRM) serves as the strategic plan for the Kidney Health Strategic Clinical Network (KHSCN), guiding our work for the next four years. The plan builds on the accomplishments of the KHSCN since its launch on January 8, 2016 and includes new priorities to address the ongoing gaps and variations in care and outcomes for people with or at risk for kidney disease in Alberta.



My wife and I have been involved with the KHSCN since January 2016. We are so pleased to see, and continue to support, all of the efforts that the KHSCN makes to create a kidney health care system as patient centered as possible.



The committee is succeeding.

*— Bob & Marilyn Stallworthy,
Patient & Family Advisors*

The Kidney Health Strategic Clinical Network™ TRM At A Glance

Vision: Optimal kidney health for all Albertans

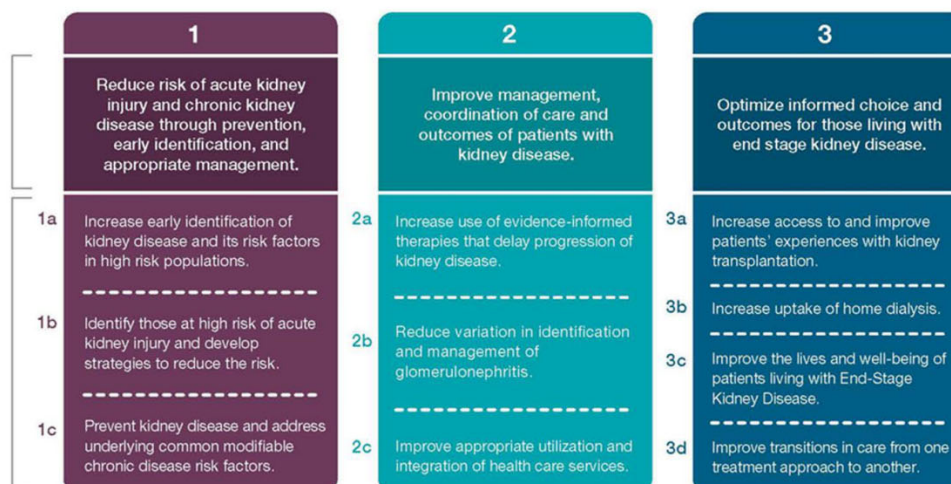
Mission: Through innovation, partnership, and use of best evidence, we will optimize prevention, early identification and management of kidney health across all ages and stages of kidney disease.

Strategic Directions:

Priorities:

Principles:

Enablers:



Patient & Family Centred Care	Engagement	Culture of Quality	Evidence-Informed Approaches	Sustainability	Research, Innovation & Evaluation	Pediatric Perspectives
Performance Measurement	Patient Reported Outcomes & Experience Measures	Patient & Provider Education	Partnerships	Communication	Clinical Pathways	Technology

See the following web site for the full description:

(<https://www.albertahealthservices.ca/assets/about/scn/ahs-scn-kh-transformational-road-map-2019-2023.pdf>)