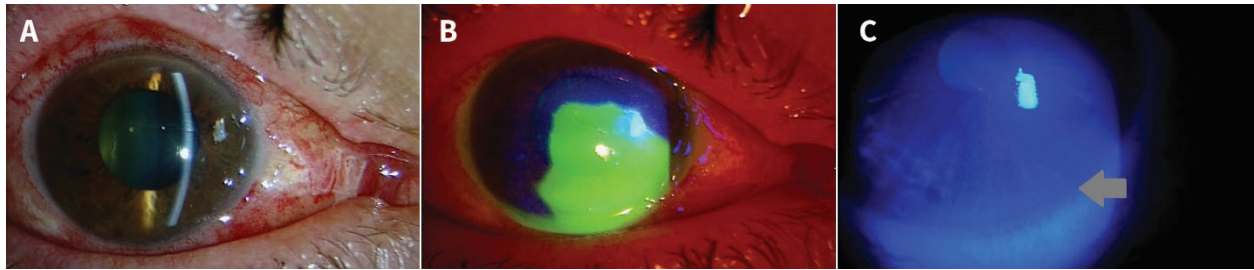


**Appendix 1 (as submitted by the authors):** Mild limbal stem cell deficiency after ocular chemical injury (Supplementary Figure)



**Figure** (A) Slit-lamp examination of a right eye after a chemical injury caused by contact lens solution showing a subtle epithelial defect in the inferior cornea. (B) Same eye re-examined under a cobalt blue filter after instillation of fluorescein stain highlighting the epithelial defect in the inferior cornea. (C) Same eye re-examined 2 months later using a cobalt blue filter showing new conjunctivalization of the inferior cornea (grey arrow) in the area of the previous epithelial defect, indicative of mild limbal stem cell deficiency from the injury.