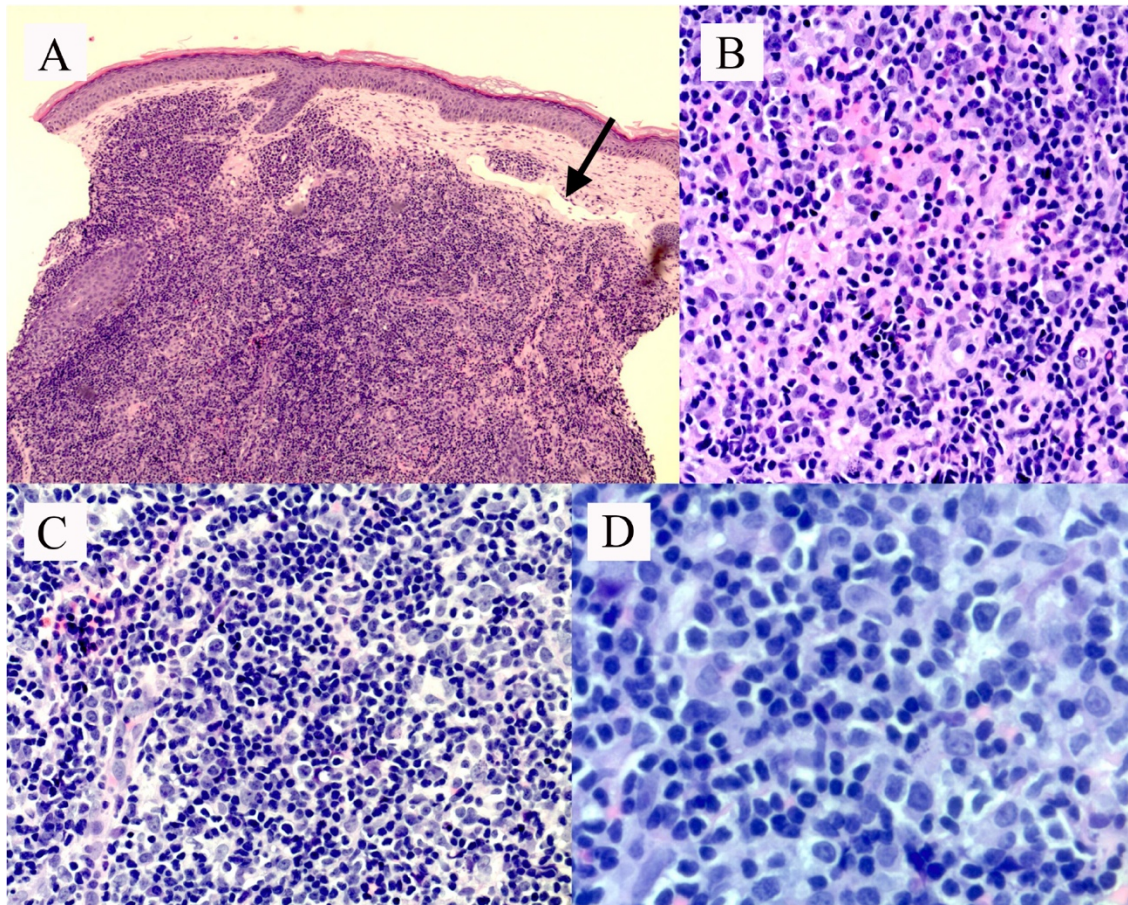


Appendix 1 (as supplied by the authors): Histopathology



(A) Biopsy of the lesion showed a (B, C) diffuse polymorphous infiltrate of lymphocytes, histiocytes, plasma cells and a few eosinophils, which were separated from a normal appearing epidermis by a thin Grenz zone (black arrow). Hematoxylin and eosin stain. Original magnification (A) $\times 100$; (B, C) $\times 200$. (D) Immunohistochemistry showed a mixed population of B and T cells. These combined features were consistent with a reactive process, and we made a final diagnosis of cutaneous lymphoid hyperplasia, or pseudolymphoma.