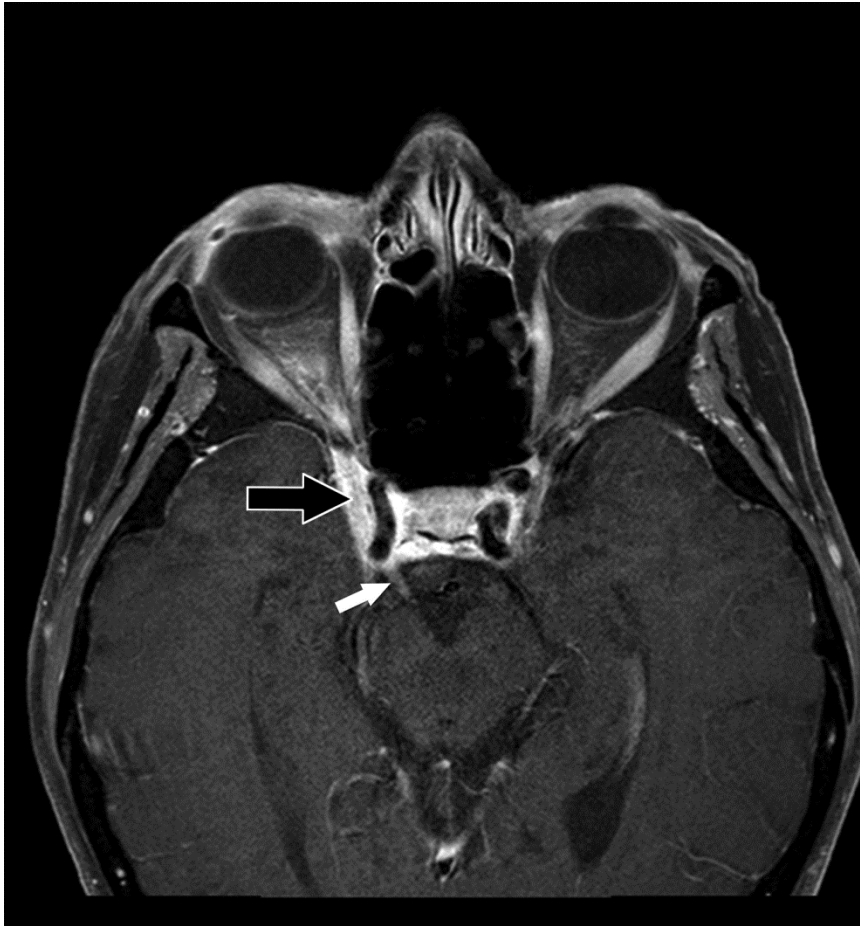


Appendix 1: Axial T_1 -weighted magnetic resonance imaging showing enhancing, rope-like tissue extending from the orbital apex toward the cavernous sinus



Axial view of T_1 -weighted magnetic resonance imaging with gadolinium (fat saturated) at the level of the right orbital apex demonstrating the rope-like enhancing tissue extending toward the right cavernous sinus (black arrow). More caudally, there is enhancement of the right oculomotor nerve (white arrow).