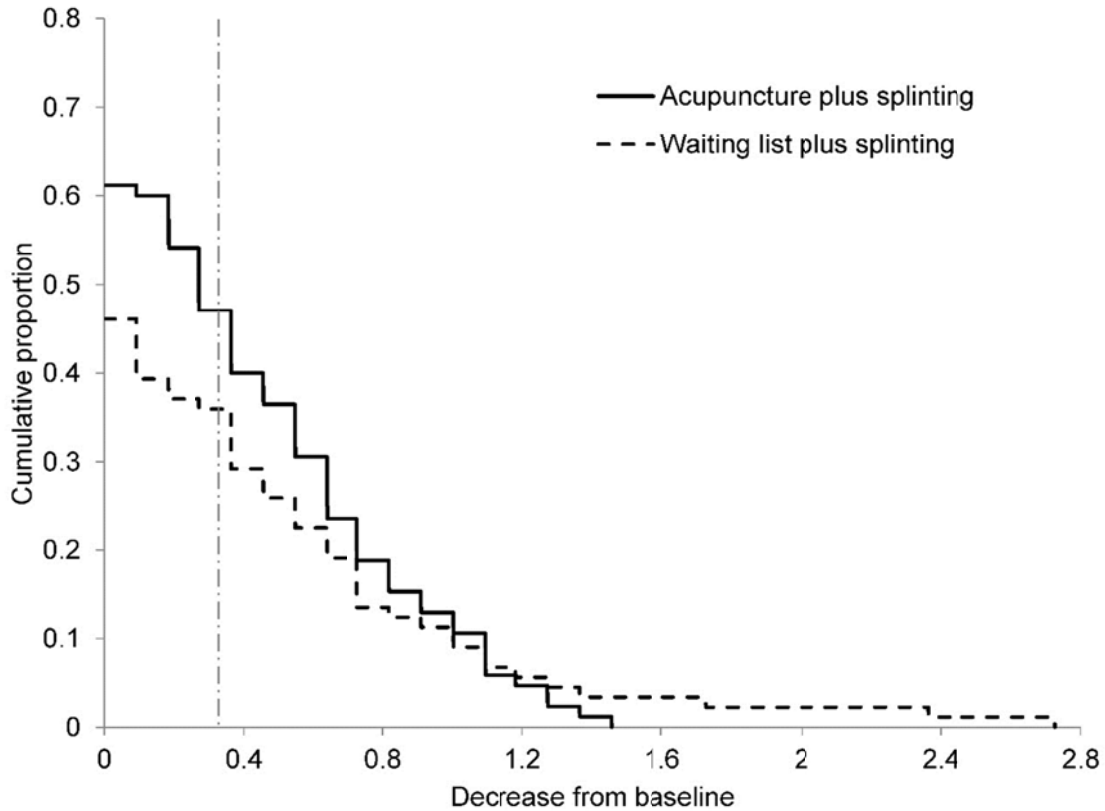


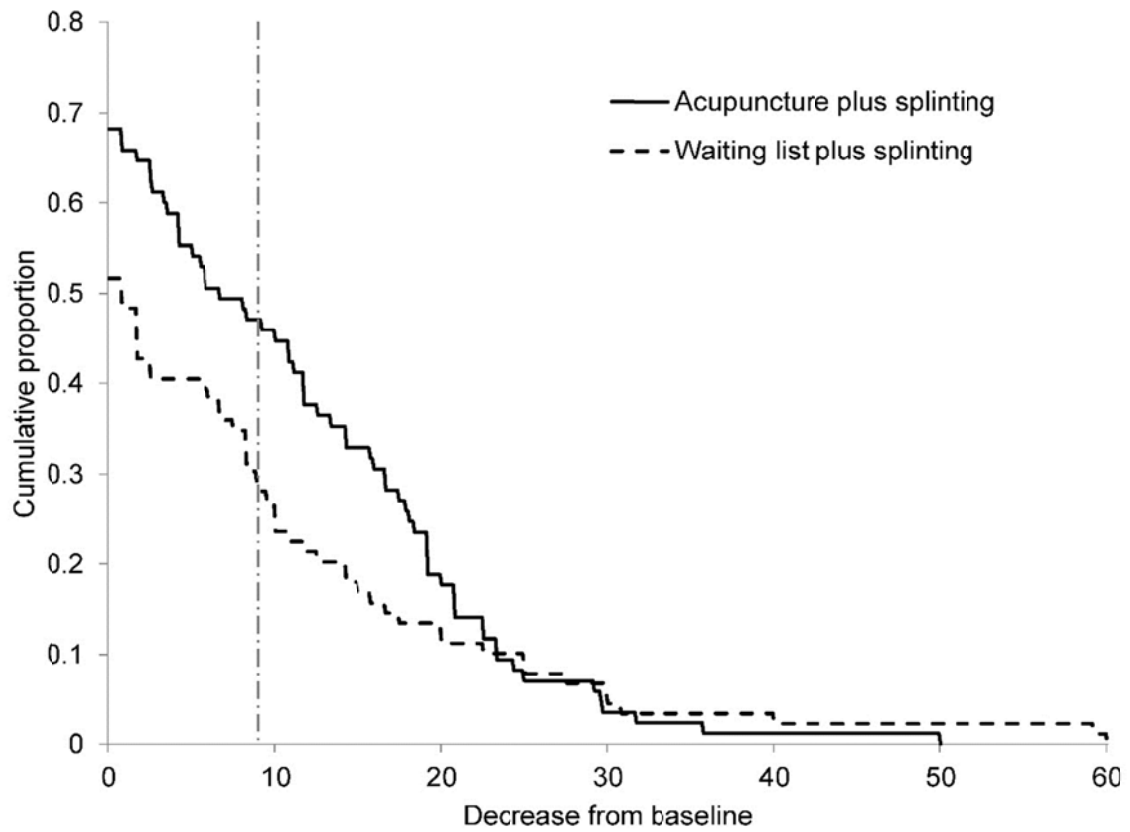
Appendix 3 (as supplied by the authors): Cumulative distribution functions for primary and secondary outcomes

Figure 1. Cumulative distributions of changes in BCTQ SSS from baseline to week 17 [^].



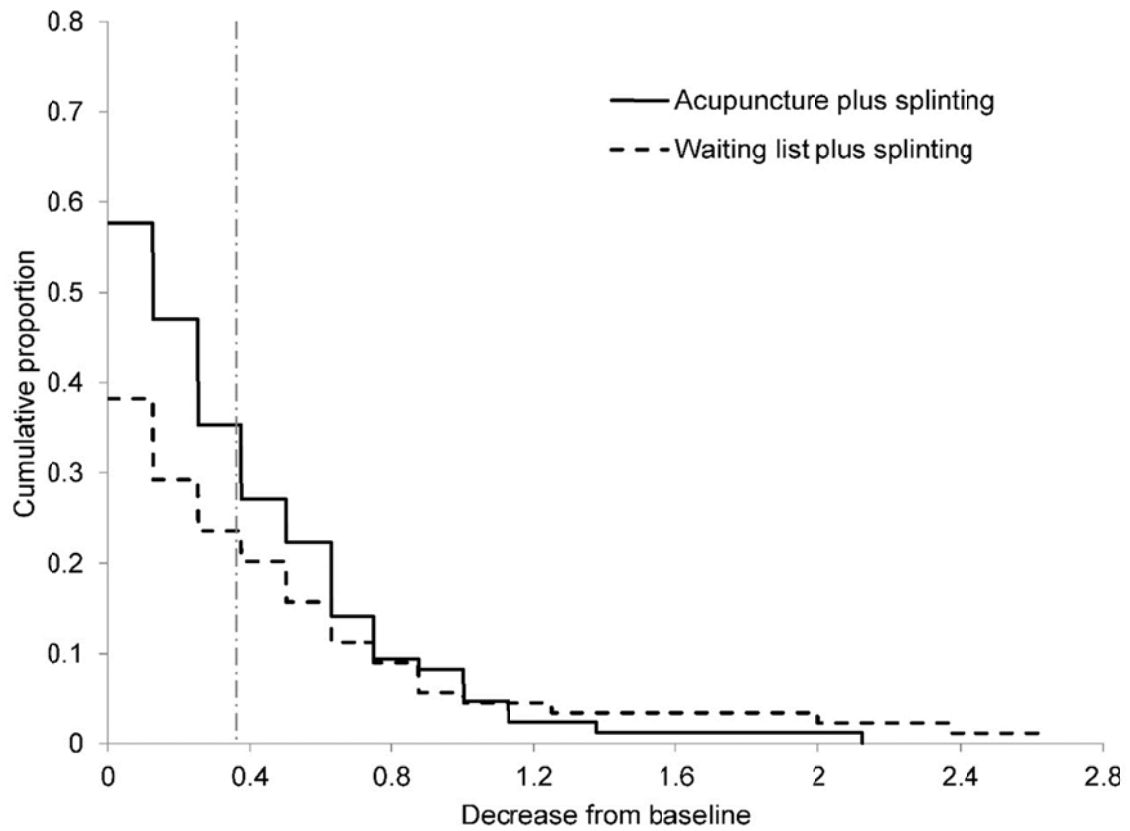
[^]Threshold for a clinically important change is defined as a half of the baseline SD for BCTQ SSS (0.33, shown in vertical dot dash line).

Appendix Figure 2. Cumulative distributions of changes in DASH from baseline to week 17 [^].



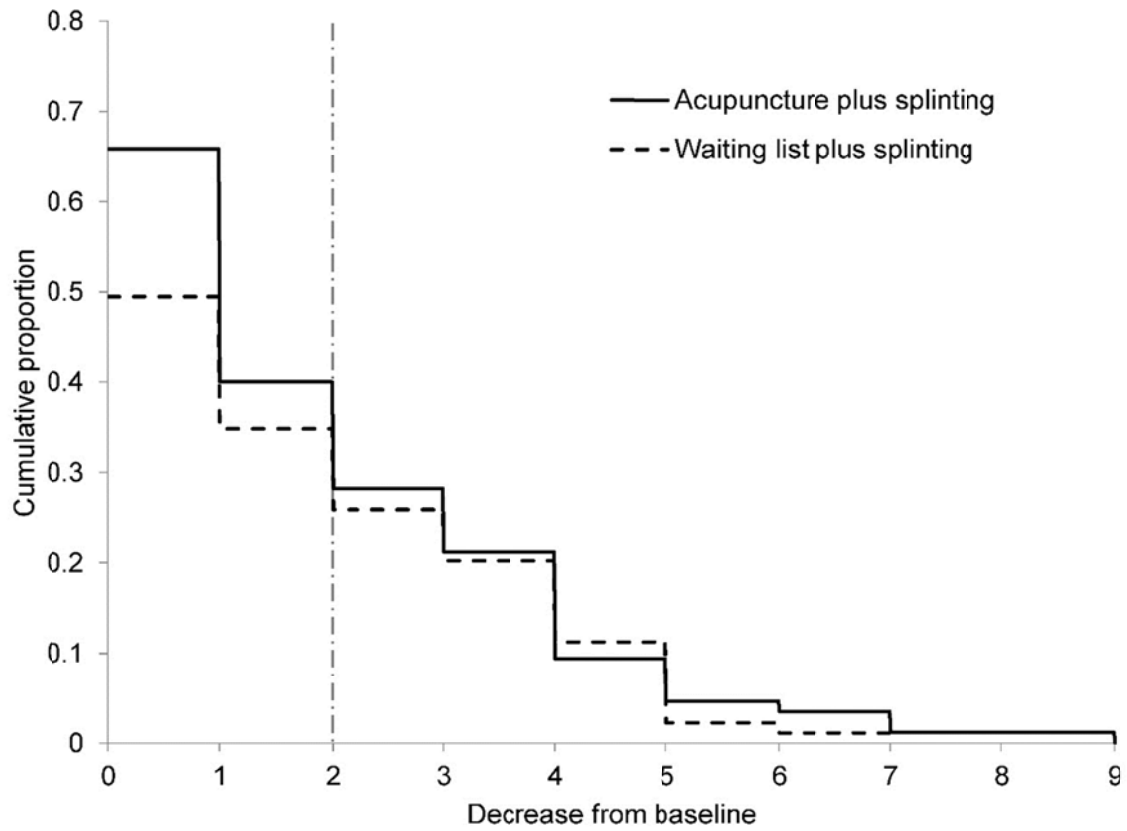
[^] Threshold for a clinically important change is defined as a half of the baseline SD for DASH (8.94, shown in vertical dot dash line)

Appendix Figure 3. Cumulative distributions of changes in BCTQ FSS from baseline to week 17 [^].



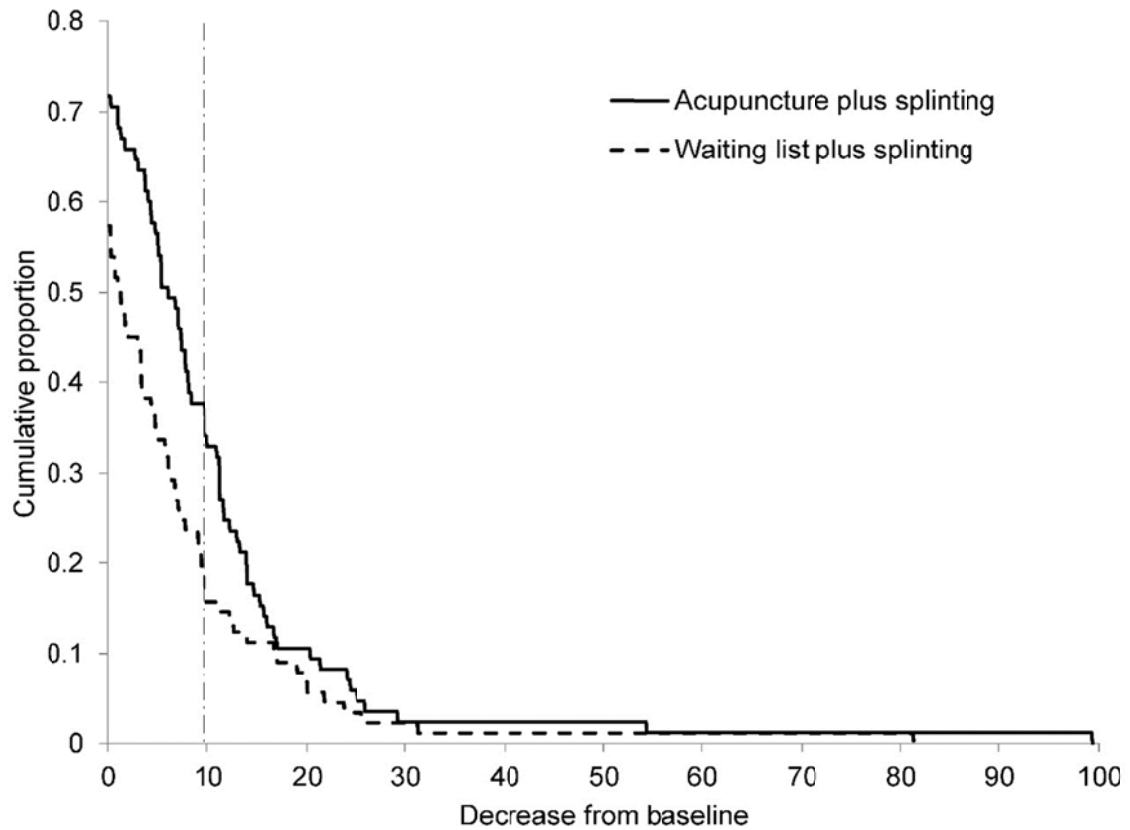
[^] Threshold for a clinically important change is defined as a half of the baseline SD for BCTQ FSS (0.36, shown in vertical dot dash line)

Appendix Figure 4. Cumulative distributions of changes on pain intensity from baseline to week 17 [^].



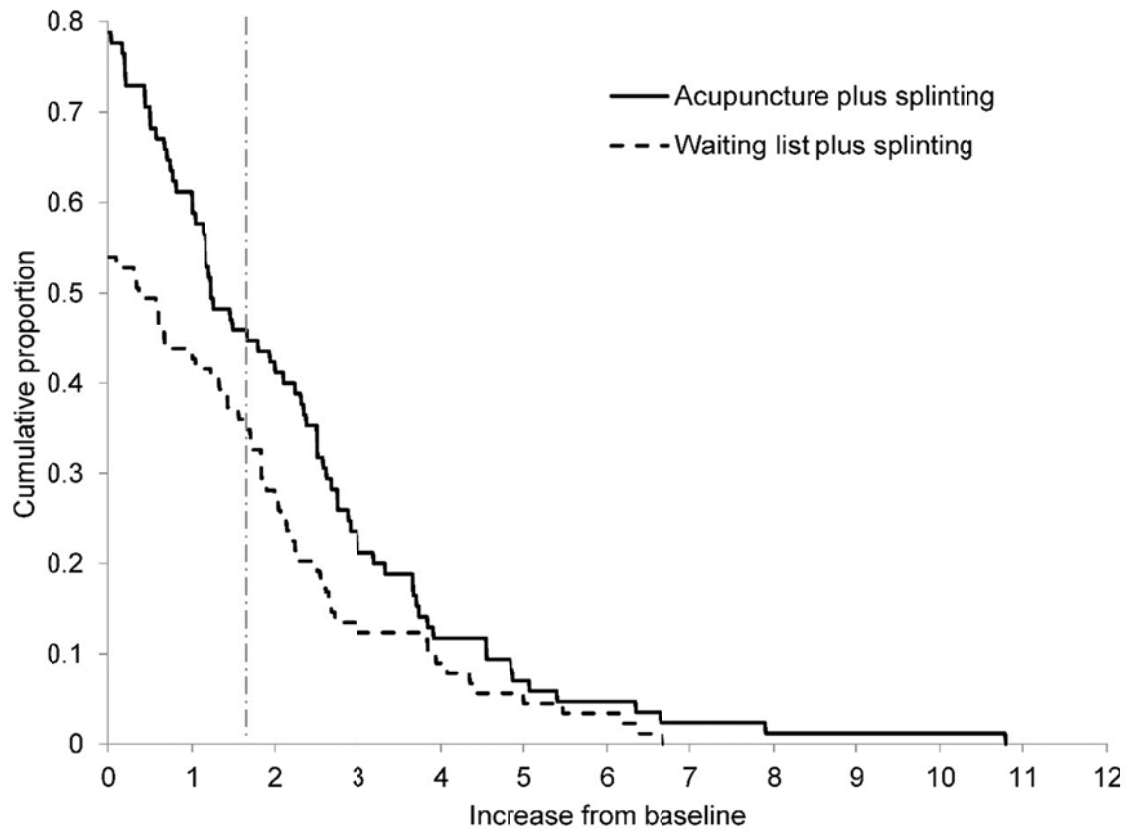
[^] Threshold for a clinically important change is defined as a 2 point reduction on the numeric rating scale (shown in vertical dot dash line).

Appendix Figure 5. Cumulative distributions of changes in blinded DMMPUT completion time from baseline to week 17 [^].



[^] Threshold for a clinically important change is defined as a half of the baseline SD for blinded DMMPUT completion time in seconds (9.6, shown in vertical dot dash line).

Appendix Figure 6. Cumulative distributions of changes in maximal tip pinch strength from baseline to week 17 [^].



[^] Threshold for a clinically important change is defined as 1.66 lbs, as shown at the vertical dot dash line.