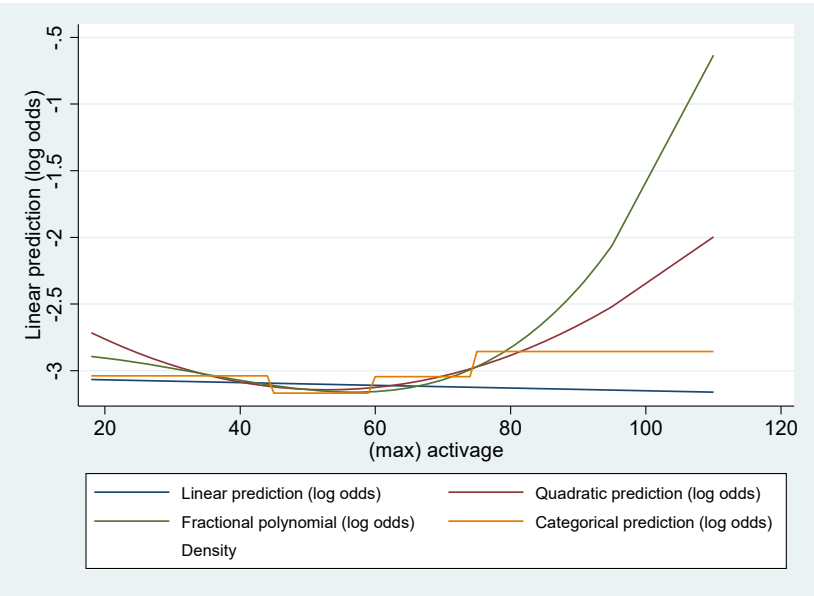
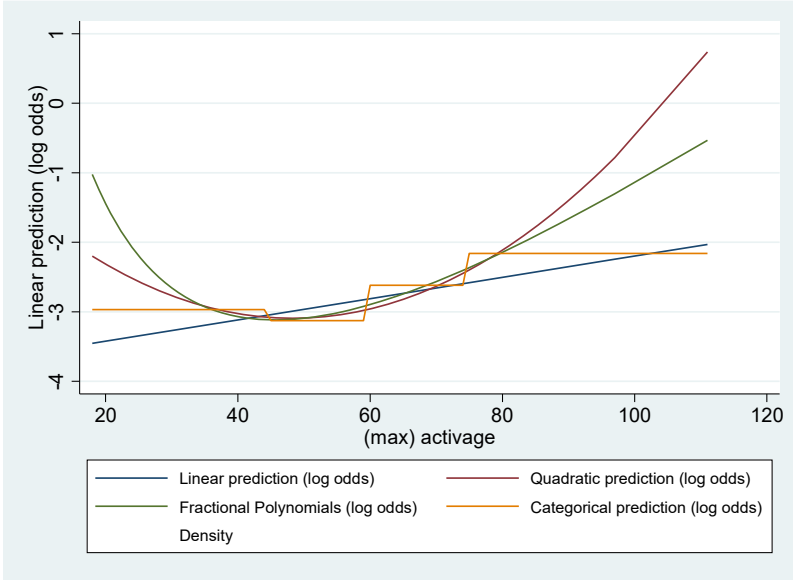


Supplementary Figure 1): Regression modelling to evaluate the linearity effect of age on major complications for laparoscopic and abdominal hysterectomy

Laparoscopic hysterectomy



Abdominal hysterectomy



Appendix 2, as supplied by the authors. Appendix to: Madhvani K, Fernandez Garcia S, Fernandez-Felix BM, et al. Predicting major complications in patients undergoing laparoscopic and open hysterectomy for benign indications. CMAJ 2022. DOI: 10.1503/cmaj.220914. Copyright © 2022 The Author(s) or their employer(s). To receive this resource in an accessible format, please contact us at cmajgroup@cmaj.ca.