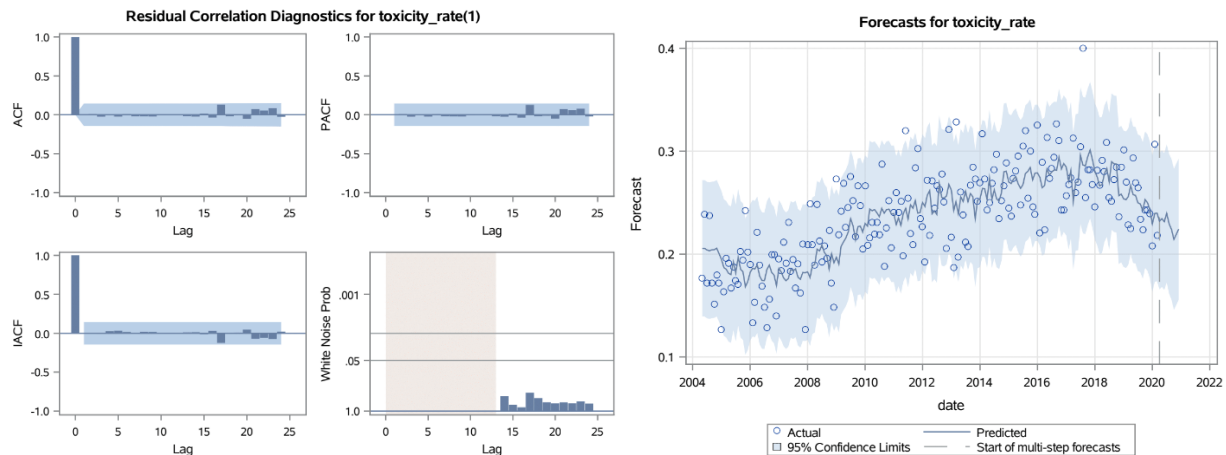


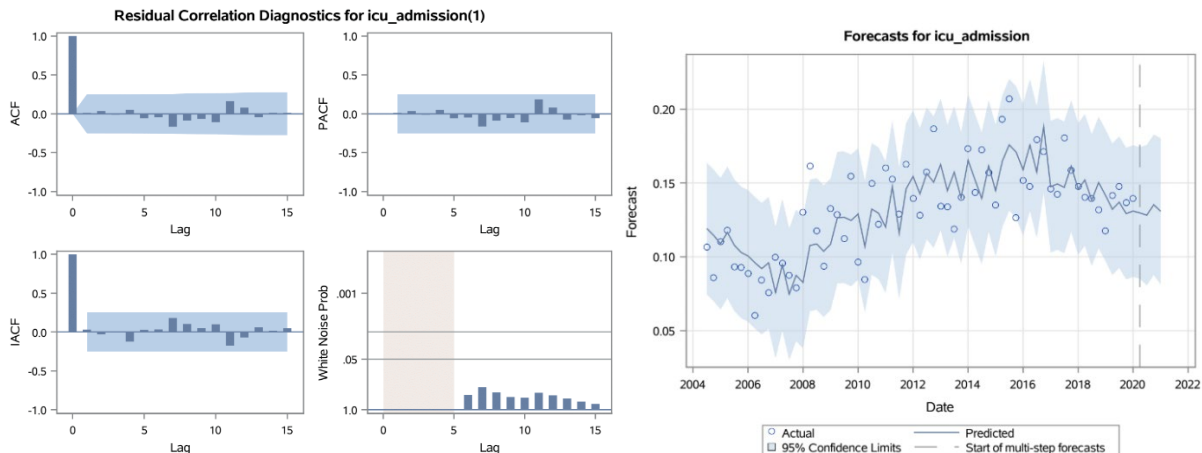
**ARIMA Model Summary Table**

Measure	ARIMA Model	AIC	BIC	R-square	November 2009 Ramp Intervention		September 2016 Ramp Intervention		March 2018 Ramp Intervention	
					p-value	estimate (standard error)	p-value	estimate (standard error)	p-value	estimate (standard error)
Accidental Toxicity Rates (monthly)	(13,1,0) no intercept	-736.3	-684.3	0.53	0.23	0.00056 (0.00046)	0.70	-0.00048 (0.00123)	0.22	-0.0020 (0.00160)
ICU Admission Rates (quarterly)	(5,1,0) no intercept	-290.6	-273.5	0.54	0.22	0.00165 (0.00134)	0.22	-0.00451 (0.00365)	0.77	0.00138 (0.00477)
Opioid Poisoning Rates (quarterly)	(3,1,0) no intercept	-307.1	-294.3	0.85	0.30	0.00181 (0.00173)	0.87	-0.00072 (0.00441)	0.07	-0.10136 (0.00551)

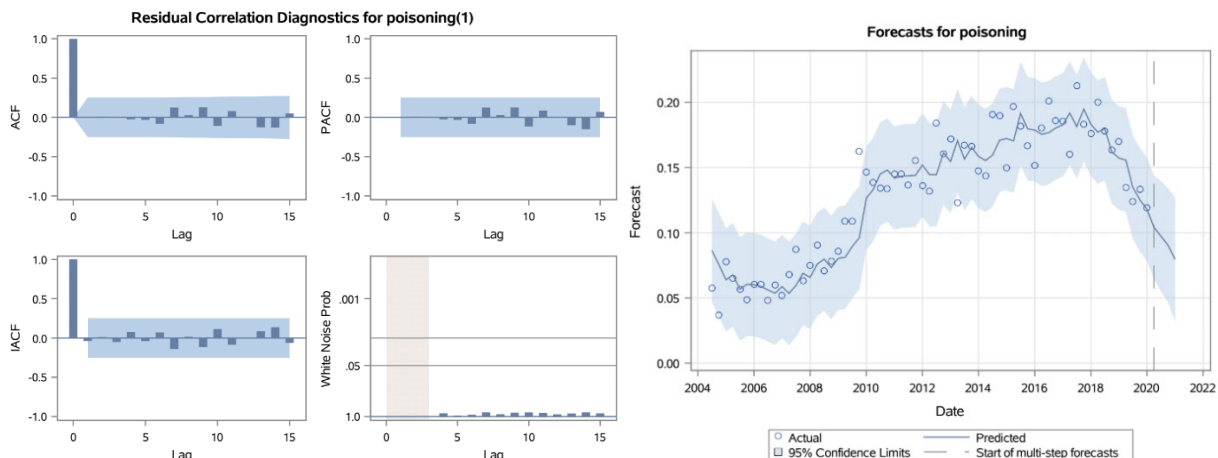
## Model Diagnostics for Accidental Toxicity Rates (ARIMA [13,1,0] no intercept)



## Model Diagnostics for ICU Admission Rates (ARIMA [5,1,0] no intercept)



## Model Diagnostics for Opioid Poisoning Rates (ARIMA [3,1,0] no intercept)



Appendix 2, as submitted by the authors. Appendix to: Antoniou T, Guan Q, Martins D, et al. Impact of acetaminophen product labelling changes in Canada on hospital admissions for accidental acetaminophen overdose: a population-based study. *CMAJ* 2022. doi: 10.1503/cmaj.210842. Copyright © 2022 The Author(s) or their employer(s). To receive this resource in an accessible format, please contact us at [cmajgroup@cmaj.ca](mailto:cmajgroup@cmaj.ca).