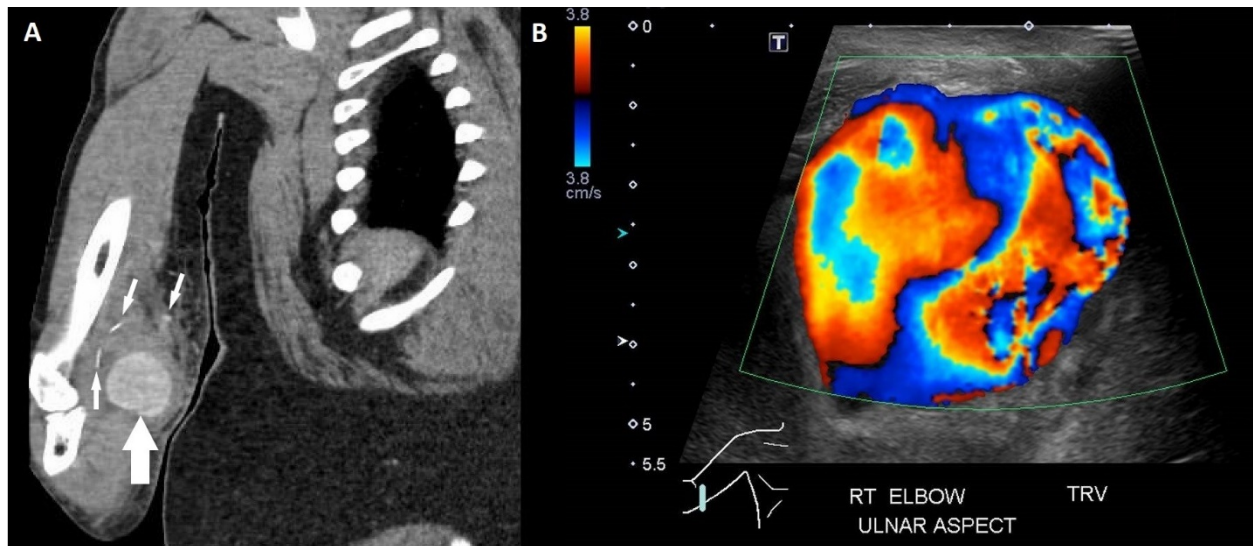


Appendix 1 (as submitted by the authors): Supplementary figure



Computed tomography angiography (A) showing a 4.8 × 4.8cm brachial artery pseudoaneurysm (large white arrow) with multiple 0.7–1.0cm needle fragments (small white arrows) in the surrounding tissues. The Doppler ultrasound (B) demonstrates turbulent flow.