

# COVID-19 VERSUS INFLUENZA

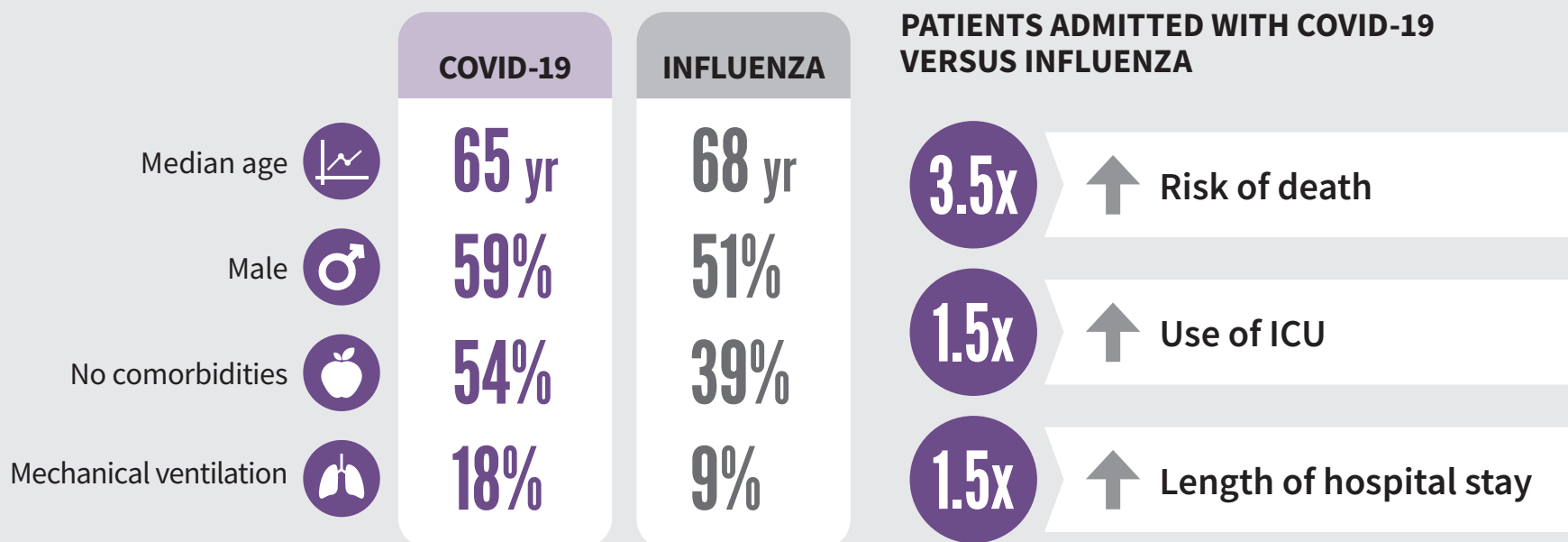
## A VISUAL RESEARCH ABSTRACT

### STUDY COHORT

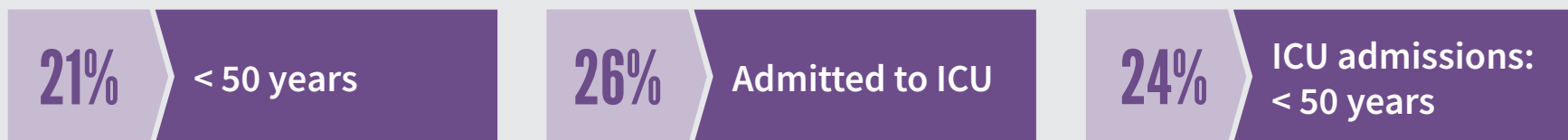
1027 hospital admissions with COVID-19 and 783 with influenza discharged between Nov. 1, 2019 and June 30, 2020 at 7 hospitals in Toronto and Mississauga, Ontario.

### OBJECTIVE

To describe patient characteristics, clinical care, resource use, outcomes and prognostic scores in hospital admissions for COVID-19 and influenza.



### AMONG PATIENTS ADMITTED WITH COVID-19



**TAKE-AWAY** Patients admitted to hospital for COVID-19 were at higher risk of death, ICU use and longer hospital stay compared to patients with influenza.