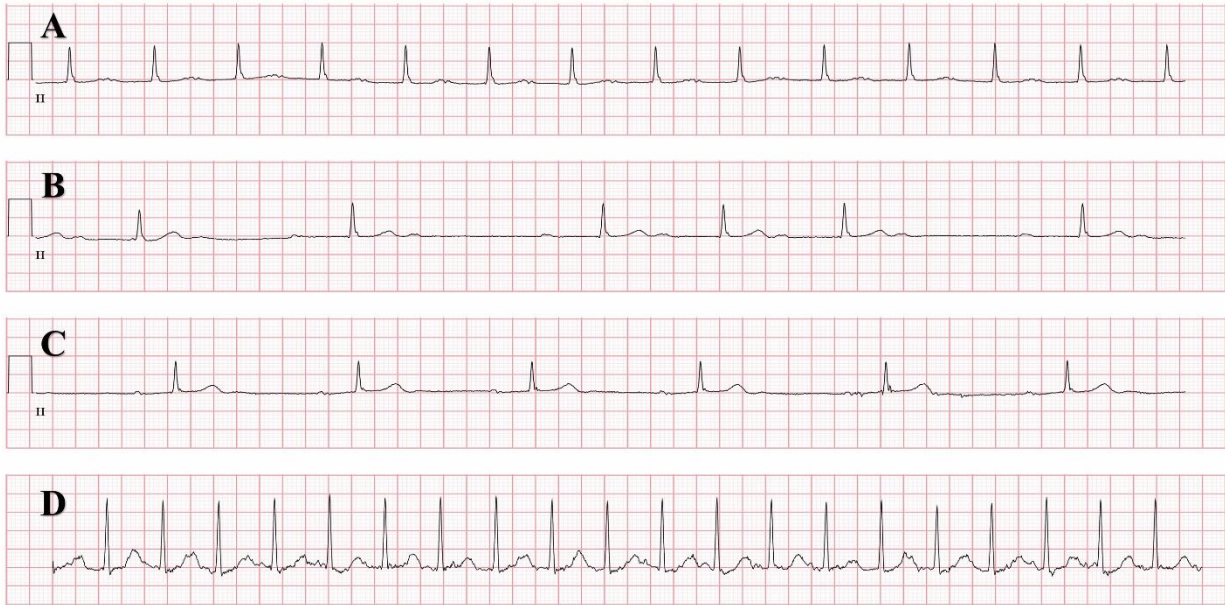


Appendix 1 (as submitted by the authors): Electrocardiographs



The electrocardiographic progression of a 56-year-old woman with Lyme carditis who presented with first and second-degree atrioventricular (AV) block. (A) Day 1: First degree AV block at 76 beats/min with a PR interval of 440 ms. (B) Day 5: Second-degree AV block at 36 beats/min with a PR interval of 560 ms, and 2:1 and 4:3 conduction. (C) Day 10: First-degree AV block at 39 beats/min with a PR interval of 320 ms. (D) Day 11: Exercise stress test. Sinus rhythm at 123 beats/min with 1:1 AV conduction present up to her maximum heart rate of 164 beats/min.