

RISK OF DEATH IN OLDER ADULTS AFTER FIRST HOSPITAL ADMISSION

VISUAL RESEARCH ABSTRACT

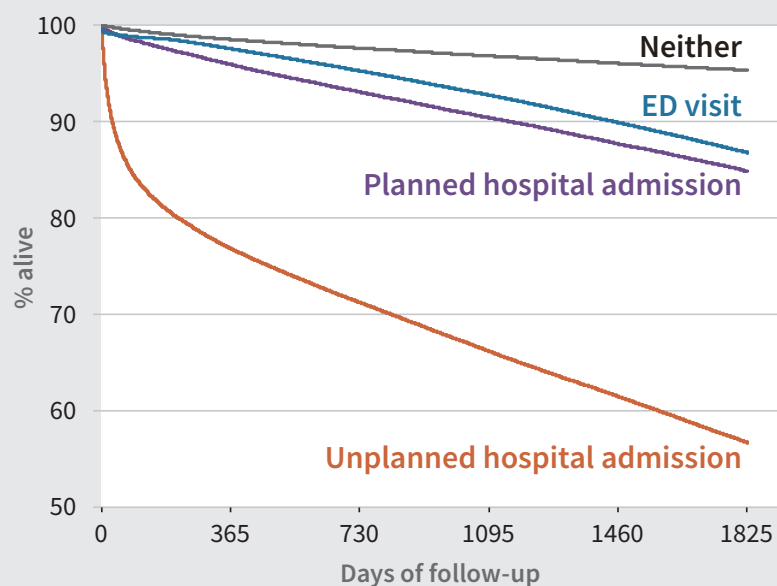
OBJECTIVE

To estimate the 5-year risk of death among older adults who had not been admitted to hospital or visited the emergency department (ED) in the previous 5 years.

STUDY POPULATION

The cohort included 922 074 community-dwelling adults aged ≥ 66 years, derived from Ontario administrative data from 2007 to 2017.

SURVIVAL BY STUDY GROUP



NUMBER OF DEATHS BY STUDY GROUP

Unplanned admission: 59 234 / 149 107 ED visit: 35 663 / 327 164

Planned admission: 10 775 / 82 702 Neither: 11 268 / 363 101

5x

risk of death after first unplanned hospital admission compared with general population

40%

died after an unplanned hospital admission, while only 13% of those with a first planned admission and 11% who visited the ED died.

~50% of these deaths were in the first year

MOST COMMON CAUSES OF DEATH



Cancer



Cardiovascular disease

Unplanned first hospital admission is an important indicator of risk of death within 5 years in older adults. This finding may prompt patients, families and their clinicians to make informed decisions and advanced planning for their future health care.