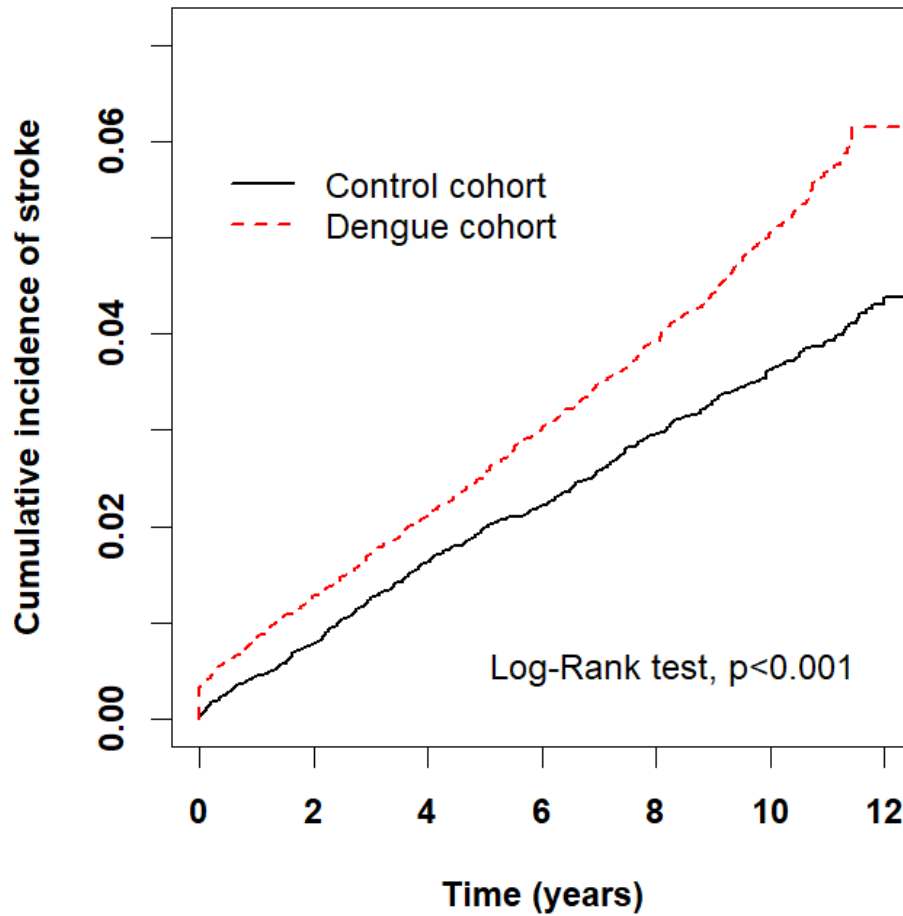


Appendix 2 (as supplied by the authors): Detailed results

Part 1: Cumulative incidence of stroke compared between dengue and control cohorts using the Kaplan-Meier method



Part 2: Incidence and HR of stroke between control cohort and subgroups of dengue cohort

Variable	N	Event	Rate[#]	Crude HR(95% CI)	Adjusted HR[†](95% CI)
Control	13787	405	4.87	1	(reference)
Primary dengue fever	12097	447	4.96	1.33(1.16-1.52)	1.14(1.00-1.31)
Primary dengue hemorrhagic fever	1225	84	7.92	2.13(1.68-2.70)	1.40(1.10-1.77)
Repeated dengue infection	465	26	6.85	1.84(1.23-2.73)	1.19(0.80-1.77)

Abbreviation: HR, hazard ratio; CI, confidence interval

[†] Adjusted for sex, age, total admission days, and comorbidity in Cox proportional hazards regression

[#] Incidence rates, per 1,000 person-years.

Part 3: Multivariate analysis of stroke risk factors

Risk factors	Adjusted HR[†]	95% CI
Dengue fever (v. control)	1.18	(1.03-1.34)
Male gender (v. female)	1.46	(1.29-1.67)
Age, per year	1.07	(1.06-1.07)
Atrial fibrillation and flutter (v. absence of atrial fibrillation and flutter)	1.51	(0.98-2.34)
Cancer (v. absence of cancer)	1.24	(0.92-1.68)
COPD (v. absence of COPD)	1.17	(0.92-1.49)
Chronic renal failure (v. absence of chronic renal failure)	1.33	(0.8-2.22)
Diabetes mellitus (v. absence of diabetes mellitus)	2.01	(1.66-2.43)
Dyslipidemia (v. absence of dyslipidemia)	1.49	(1.15-1.92)
Heart failure (v. absence of heart failure)	1.01	(0.71-1.45)
Hypertension (v. absence of hypertension)	1.45	(1.2-1.76)
Ischemic heart disease (v. absence of ischemic heart disease)	1.03	(0.82-1.3)

Abbreviations: CI, confidence interval; COPD, chronic obstructive pulmonary disease; HR, hazard ratio

[†] Adjusted for sex, age, total admission days, and comorbidity in Cox proportional hazards regression

Part 4: Sensitivity analysis - baseline characteristics in dengue and control cohort by propensity score matching

Variable	Dengue				P-value ^a
	No		Yes		
	n	(%)	n	(%)	
Overall	13787	(50.0)	13787	(50.0)	
Sex					<0.001
Female	6547	(47.5)	6862	(49.8)	
Male	7240	(52.5)	6925	(50.2)	
Age, years, mean, (SD)	45.1	(20.1)	44.6	(19.3)	0.02
≤ 30	3629	(26.3)	3581	(26.0)	
31-60	6562	(47.6)	6886	(50.0)	
> 60	3596	(26.1)	3320	(24.1)	
Total Admission days, mean(SD)	13.4	(107)	10.5	(51.5)	0.004
Comorbidity					
Atrial fibrillation and flutter	64	(0.46)	64	(0.46)	0.99
Diabetes mellitus	573	(4.16)	625	(4.53)	0.12
Dyslipidemia	291	(2.11)	306	(2.22)	0.53
Heart failure	154	(1.12)	133	(0.96)	0.21
Hypertension	907	(6.58)	876	(6.35)	0.45
Ischemic heart disease	474	(3.44)	447	(3.24)	0.37
COPD	409	(2.97)	371	(2.69)	0.17
Chronic renal failure	90	(0.65)	86	(0.62)	0.76
Cancer	310	(2.25)	292	(2.12)	0.46
Follow-up years, mean(SD)	7.62	(3.87)	7.58	(3.77)	

Abbreviation: SD, standard deviation; COPD, chronic obstructive pulmonary disease

^a Student t test for continuous variables and chi-square test for categorical variables

Part 5: Sensitivity analysis - risk trends of stroke in both cohorts stratified by follow-up period and stroke types

Follow-up period	Control cohort			Dengue cohort			Compared with Control	
	Event	PY	Rate [#]	Event	PY	Rate [#]	Crude HR(95% CI)	Adjusted HR [†] (95% CI)
Stroke								
≤ 2 months	26	2288	11.37	58	2272	25.52	2.23(1.41-3.55)	2.56(1.61-4.07)
3-12 months	54	11309	4.77	57	11250	5.07	1.06(0.73-1.54)	1.24(0.85-1.79)
> 12 months	432	91455	4.72	442	91041	4.85	1.02(0.89-1.16)	1.05(0.92-1.21)
Hemorrhagic stroke								
≤ 2 months	0	2291	0	10	2279	4.39		
3-12 months	13	11342	1.15	14	11303	1.24	1.08(0.51-2.3)	1.25(0.59-2.65)
> 12 months	65	92982	0.7	74	92931	0.8	1.14(0.81-1.6)	1.16(0.83-1.62)
Ischemic stroke								
≤ 2 months	14	2289	6.12	29	2276	12.74	2.07(1.1-3.92)	2.42(1.27-4.62)
3-12 months	28	11327	2.47	26	11282	2.3	0.93(0.55-1.59)	1.09(0.64-1.85)
> 12 months	259	92192	2.81	258	91954	2.81	0.99(0.83-1.18)	1.03(0.87-1.23)

Abbreviation: PY, person-years; HR, hazard ratio; CI, confidence interval

[†] Adjusted for sex, age, total admission days, and comorbidity in Cox proportional hazards regression

[#] Incidence rates, per 1,000 person-years.