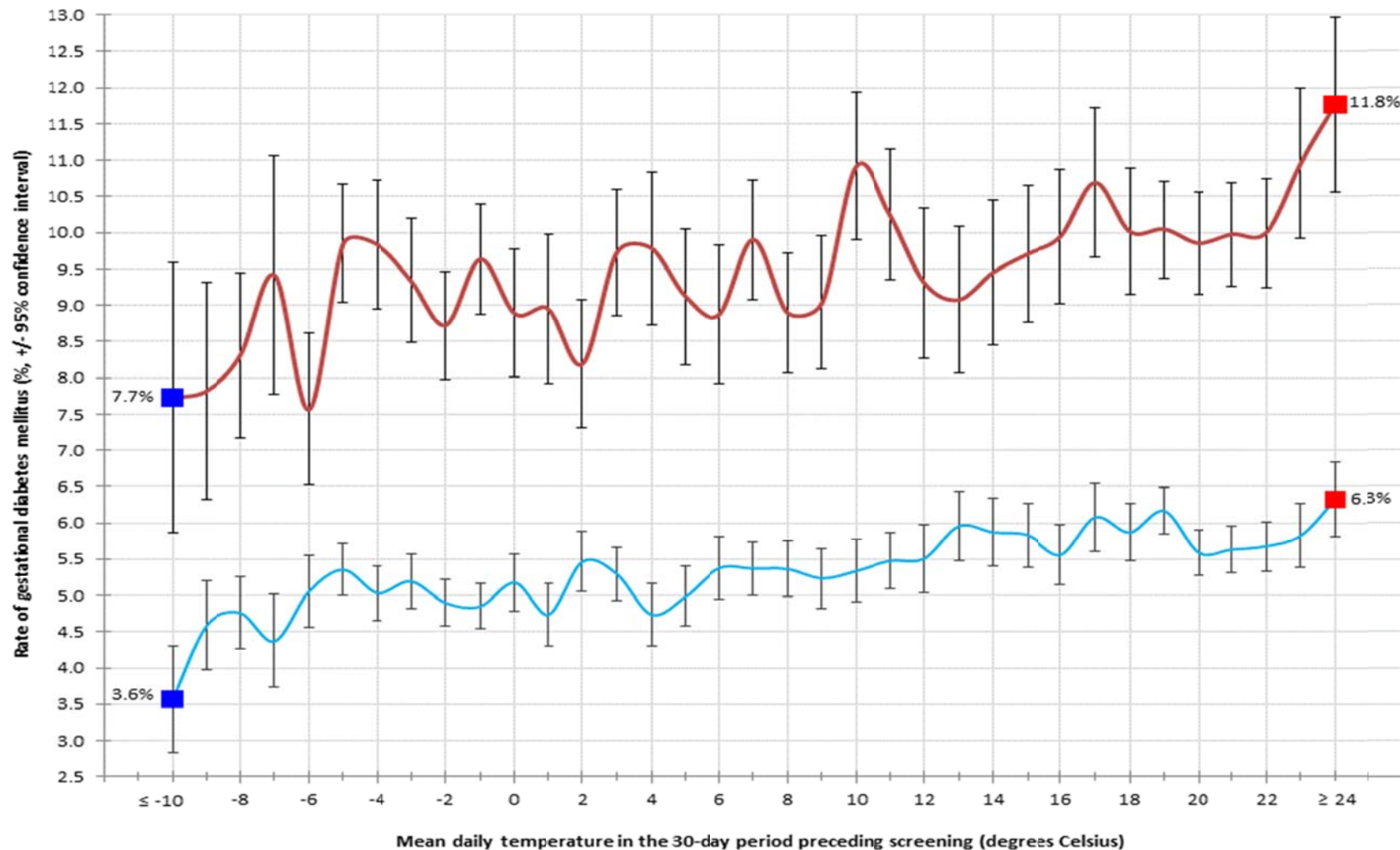


Appendix 4 (as supplied by the authors): Mean daily temperature over the 30-day period prior to screening for gestational diabetes mellitus and the corresponding rate (95% confidence interval [vertical bars]) of gestational diabetes mellitus

Data are shown for 138,481 pregnancies of women born in a hot climate country (upper red line) and 417,430 pregnancies of women born in a non-hot climate country (lower blue line), in the entire Greater Toronto Area, Ontario, 2002 to 2014.



Appendix to: Booth GL, Luo J, Park AL, et al. Influence of environmental temperature on risk of gestational diabetes. *CMAJ* 2017.

DOI: 10.1503/cmaj.160839.

Copyright © 2017 The Author(s) or their employer(s).

To receive this resource in an accessible format, please contact us at cmajgroup@cmaj.ca.