

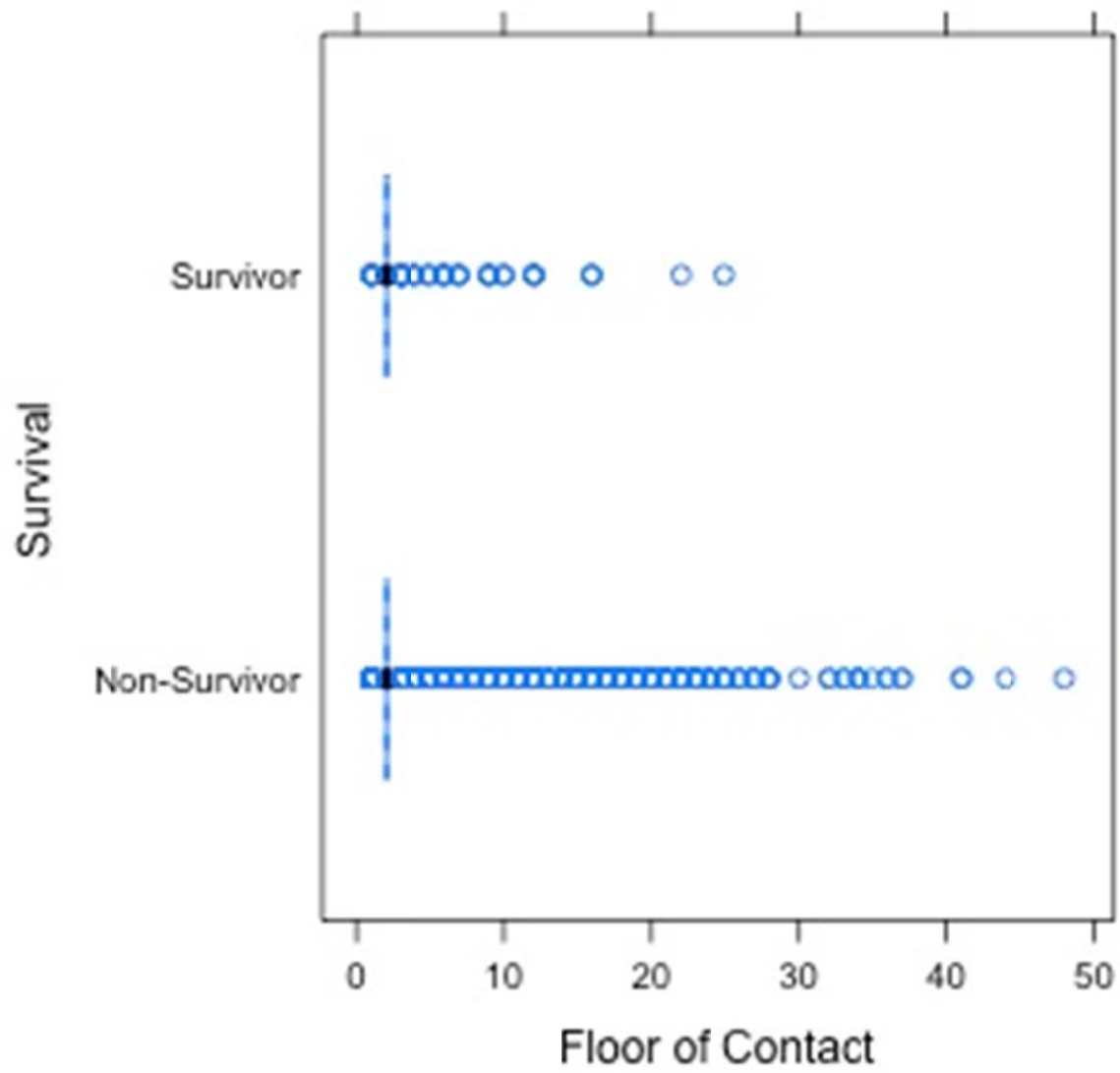
Appendix 1 (as supplied by the authors): Regression analysis with different groupings of floor of patient contact. CI = confidence interval, CPR = cardiopulmonary resuscitation, OR = odds ratio, SD = standard deviation.

Regression analysis with floor of patient contact categorized by every 5 floors				
Variable	Survivors	Non-Survivors	Unadjusted Analysis	Adjusted Analysis
	n = 300	n = 7,538	OR (95% CI)	OR (95% CI)
Age (year), mean (SD)	60.1 (16.3)	71.1 (15.7)	0.96 (0.958,0.97)	0.96 (0.96,0.97)
Sex, male, n (%)	201 (67.0)	4647 (61.6)	0.77 (0.61,0.98)	0.72 (0.54,0.95)
Event witnessed by bystander, n (%)	224 (74.6)	3007 (39.9)	4.76 (3.68,6.25)	2.94 (2.18,4.01)
Floor of contact (≥5 floors), n (%)	18 (6)	575 (7.6)	0.74 (0.44,1.17)	0.77 (0.43,1.30)
Floor of contact (≥10 floors), n (%)	10 (3.3)	523 (6.9)	0.45 (0.22,0.81)	0.53 (0.26,0.99)
Bystander performed CPR, n (%)	136 (45.3)	2637 (35.0)	1.55 (1.23,1.94)	1.07 (0.82,1.38)
911 response (min), mean (SD)	5.8 (2.1)	6.2 (2.3)	0.89 (0.83,0.95)	0.86 (0.80,0.92)
Initial shockable rhythm present, n (%)	219 (73.0)	1160 (15.4)	14.65 (11.39,19.02)	10.75 (8.07,14.46)

Regression analysis with floor of patient contact categorized by every 10 floors

Variable	Survivors	Non-Survivors	Unadjusted Analysis	Adjusted Analysis
	n = 300	n = 7538	OR (95% CI)	OR (95% CI)
Age (year), mean (SD)	60.1 (16.3)	71.1 (15.7)	0.96 (0.958,0.97)	0.96 (0.95,0.97)
Sex, male, n (%)	201 (67.0)	4647 (61.6)	0.77 (0.61,0.98)	0.72 (0.54,0.96)
Event witnessed by bystander, n (%)	224 (74.6)	3007 (39.9)	4.76 (3.68,6.25)	2.94 (2.18,4.01)
Floor of contact (10–19 floors), n (%)	11 (3.7)	503 (6.7)	0.53 (0.27,0.92)	0.58 (0.29,1.06)
Floor of contact (≥20 floors), n (%)	2 (0.67)	116 (1.5)	0.42 (0.07,1.32)	0.53 (0.08,1.87)
Bystander performed CPR, n (%)	136 (45.3)	2637 (35.0)	1.55 (1.23,1.94)	1.07 (0.83,1.38)
911 response (min), mean (SD)	5.8 (2.1)	6.2 (2.3)	0.89 (0.83,0.95)	0.86 (0.79,0.92)
Initial shockable rhythm present, n (%)	219 (73.0)	1160 (15.4)	14.65 (11.39,19.02)	10.78 (8.09,14.50)

Box and Whisker plot of survivors vs. non-survivors by floor of patient contact



Regression analysis including the time from 911 responder arrival on scene to patient contact				
Variable	Survivors	Non-Survivors	Unadjusted Analysis	Adjusted Analysis
	n = 300	n = 7538	OR (95% CI)	OR (95% CI)
Age (year), mean (SD)	60.1 (16.3)	71.1 (15.7)	0.96 (0.958,0.97)	0.96 (0.96,0.97)
Sex, male, n (%)	201 (67.0)	4647 (61.6)	0.77 (0.61,0.98)	0.72 (0.54,0.97)
Event witnessed by bystander, n (%)	224 (74.6)	3007 (39.9)	4.76 (3.68,6.25)	2.84 (2.09,3.91)
Floor of contact (≥ 3 floors), n (%)	48 (16.0)	1795 (23.8)	0.61 (0.44,0.83)	0.70 (0.47,1.02)
Bystander performed CPR, n (%)	136 (45.3)	2637 (35.0)	1.55 (1.23,1.94)	1.06 (0.81,1.38)
911 response to the scene (min), mean (SD)	5.8 (2.1)	6.2 (2.3)	0.89 (0.83,0.95)	0.86 (0.79,0.93)
Initial shockable rhythm present, n (%)	219 (73.0)	1160 (15.4)	14.65 (11.39,19.02)	11.37 (8.44,15.48)
Time from arrival of 911 responders to patient contact (min), mean (SD)	3.2 (1.9)	3.5 (2.2)	0.94 (0.88,0.99)	1.00 (0.94,1.07)