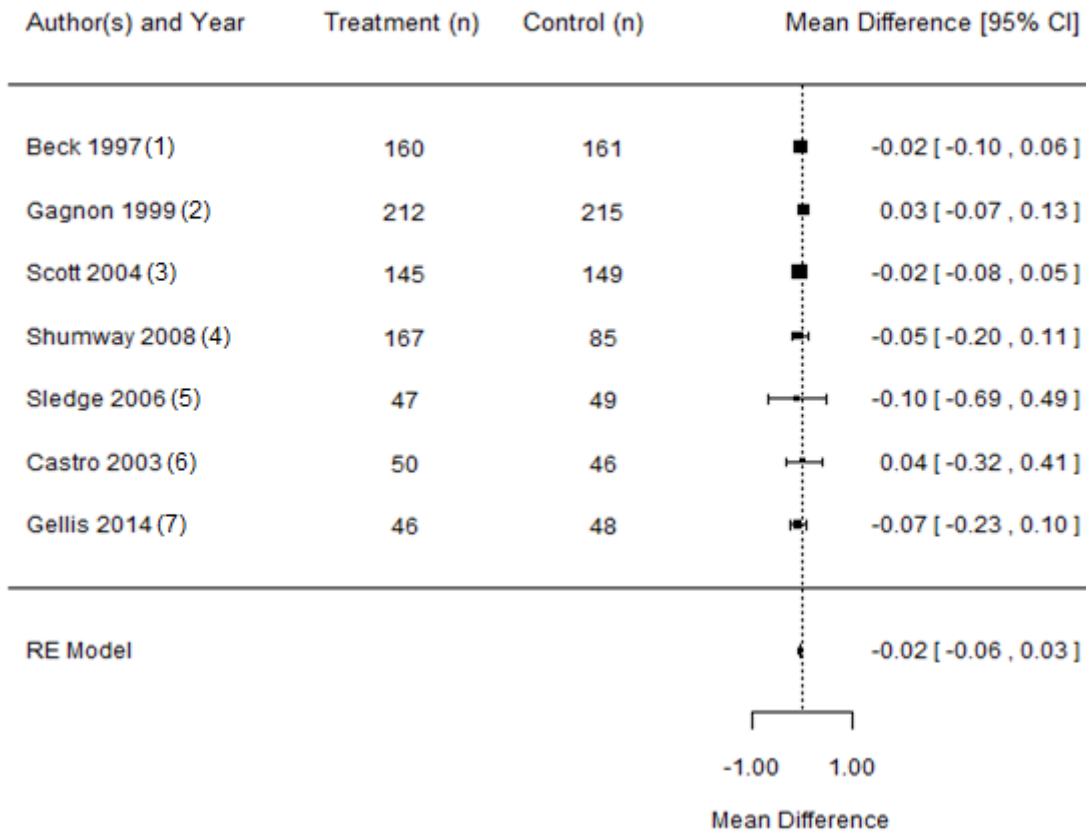


Appendix 7 (as supplied by the authors): Effect of quality improvement strategies relative to control in terms of mean number of emergency room visits per patient per month



Abbreviations: CI, Confidence interval; n, number; RE, Random effects.

$I^2 = 0\%$

References

1. Beck A, Scott J, Williams P, et al. A randomized trial of group outpatient visits for chronically ill older HMO members: the Cooperative Health Care Clinic. *J Am Geriatr Soc* 1997;45:543-9.
2. Gagnon AJ, Schein C, McVey L, et al. Randomized controlled trial of nurse case management of frail older people. *J Am Geriatr Soc* 1999;47:1118-24.
3. Scott JC, Conner DA, Venohr I, et al. Effectiveness of a group outpatient visit model for chronically ill older health maintenance organization members: a 2-year randomized trial of the cooperative health care clinic. *J Am Geriatr Soc* 2004;52:1463-70.
4. Shumway M, Boccellari A, O'Brien K, et al. Cost-effectiveness of clinical case management for ED frequent users: results of a randomized trial. *Am J Emerg Med* 2008;26:155-64.
5. Sledge WH, Brown KE, Levine JM, et al. A randomized trial of primary intensive care to reduce hospital admissions in patients with high utilization of inpatient services. *Dis Manage* 2006;9:328-38.
6. Castro M, Zimmermann NA, Crocker S, et al. Asthma intervention program prevents readmissions in high healthcare users. *Am J Respir Crit Care Med* 2003;168:1095-9.
7. Gellis ZD, Kenaley BL, Ten Have T. Integrated telehealth care for chronic illness and depression in geriatric home care patients: the Integrated Telehealth Education and Activation of Mood (I-TEAM) study. *J Am Geriatr Soc* 2014;62:889-95.