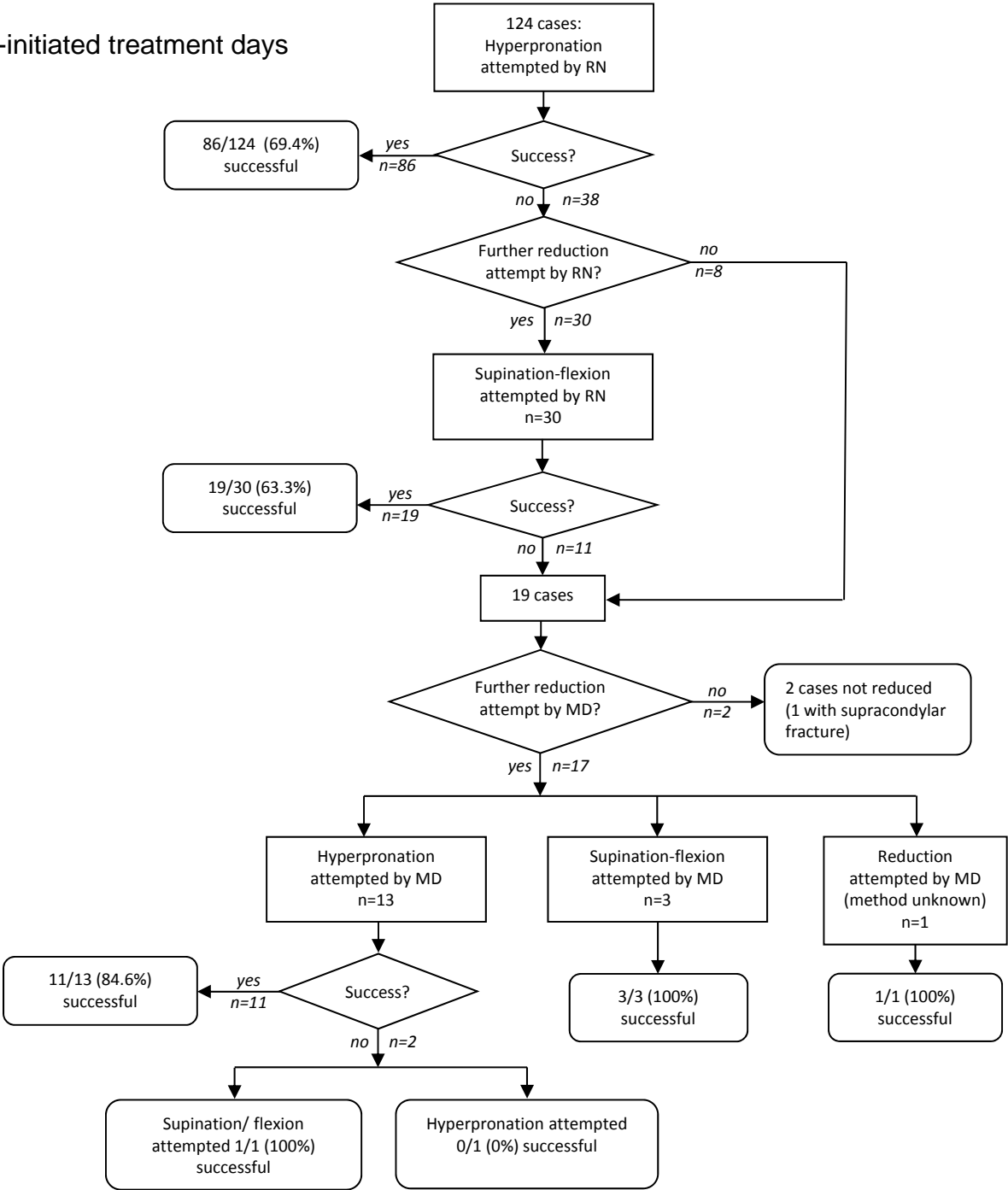


Appendix 2 (part 1 of 2): Detailed patient flow diagrams

Nurse-initiated treatment days



Appendix to: Dixon A, Clarkin C, Barrowman N, Correll R, Osmond MH, Plint AC. Reduction of radial-head subluxation in children by triage nurses in the emergency department: a cluster-randomized controlled trial. *CMAJ* 2014.
 DOI:10.1503/cmaj.131101. Copyright © 2014 The Author(s) or their employer(s).
 To receive this resource in an accessible format, please contact us at cmajgroup@cmaj.ca

Appendix 2 (part 2 of 2): Detailed patient flow diagrams

Physician-initiated treatment days

