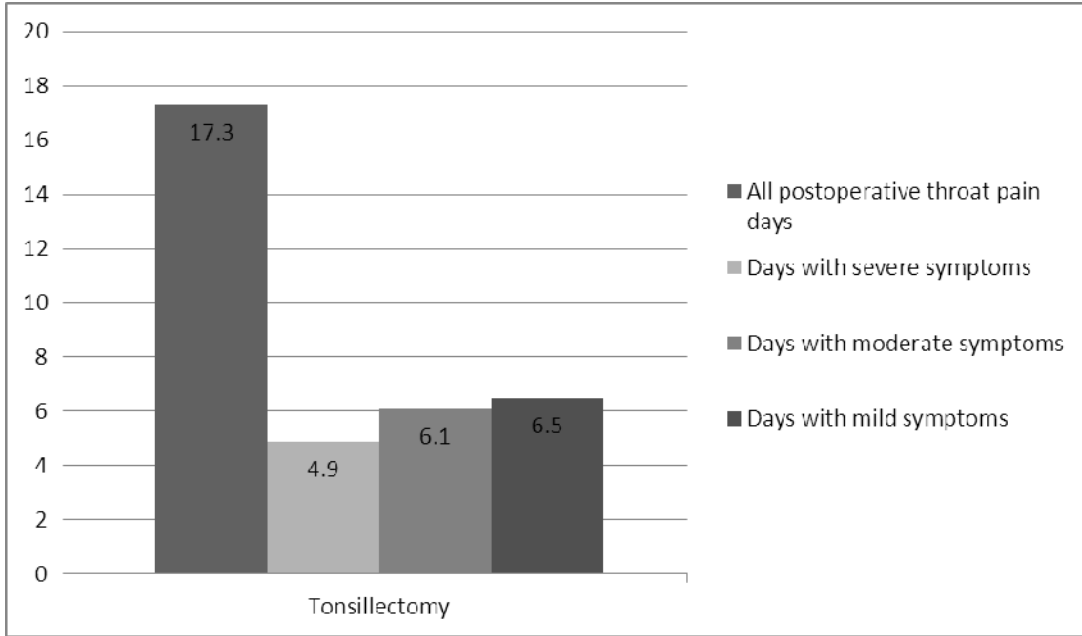


Appendix 6 (as supplied by the authors): Days with immediate postoperative pain time and days with severe, moderate or mild immediate postoperative pain during operation recovery time according to patient grading in adults with recurrent tonsillitis randomised to immediate tonsillectomy

Figures are means (standard deviations)



Days with postoperative throat pain	Tonsillectomy
All the days	17.3 (6.5)
Severe symptoms	4.9 (3.8)
Moderate symptoms	6.1 (3.1)
Mild symptoms	6.5 (4.7)