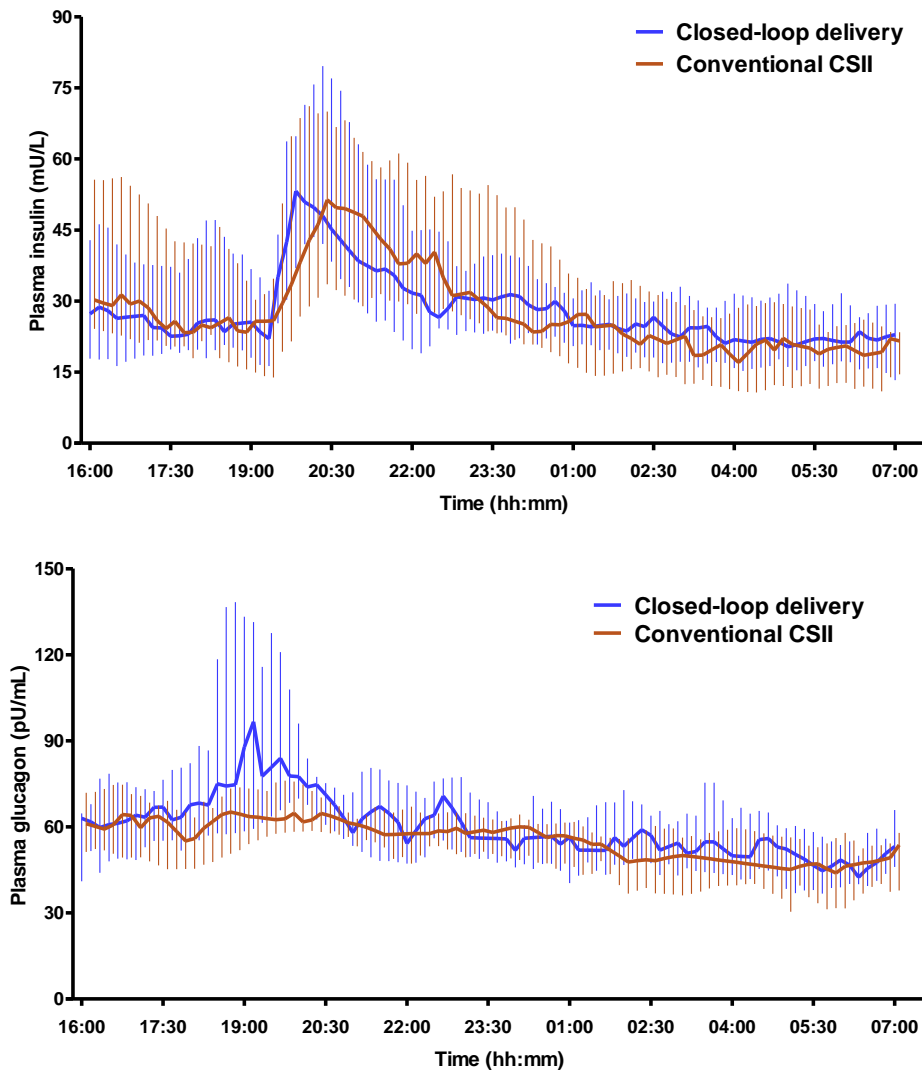


## Appendix 3 (as supplied by the authors): Supplementary Figures and Tables.



**Supplement Figure 1. Profiles (medians and interquartile ranges) of plasma insulin (top panel) and plasma glucagon concentrations (bottom panel). CSII = continuous subcutaneous insulin infusion.**

Appendix to: Haidar A, Legault L, Dallaire M, et al. Glucose-responsive insulin and glucagon delivery (dual-hormone artificial pancreas) in adults with type 1 diabetes: a randomized crossover controlled trial. *CMAJ* 2013; DOI:10.1503/cmaj.121265. Copyright © 2013 The Author(s) or their employer(s).

To receive this resource in an accessible format, please contact us at [cmajgroup@cmaj.ca](mailto:cmajgroup@cmaj.ca).

**Supplement Table 1. Baseline characteristics of study participants (n = 15, female/male = 9/6).**

<b>Characteristic</b>	<b>Mean ± SD</b>
Age (years)	47.1 ± 12.3
Weight (kg)	74.2 ± 16.9
Body mass index (kg/m <sup>2</sup> )	25.9 ± 4.6
HbA1c	7.9 ± 0.7
Duration of diabetes (years)	26.5 ± 14.8
Total daily insulin dose (U/kg)	0.57 ± 0.12

**Supplement Table 2. Characteristics of glucagon delivery. Results are median (IQR) or mean  $\pm$  SD as appropriate.**

<b>Characteristic</b>	<b>Overall study period</b>	<b>Night period*</b>
Total glucagon delivery (mg)	0.076 (0.016 to 0.17)	0.009 (0.0 to 0.054)
Number of boluses per experiment (unitless)	4 $\pm$ 3	1.6 $\pm$ 2.2
Size of bolus (mg)	0.014 (0.013 to 0.036)	0.014 (0.011 to 0.028)
Time since last insulin delivery (min)	40 $\pm$ 35	57 $\pm$ 42
Glucose level at the time of bolus delivery (mmol/l)	4.9 (4.2 to 6.0)	5.0 (4.6 to 5.8)
Glucose rate of change at the time of bolus delivery (mmol/l per hour)	-0.8 (-2.0 to 0.3)	-0.5 (-1.8 to 0.1)
Glucose level 20 minutes post bolus delivery (mmol/l)	5.3 (4.6 to 6.3)	5.2 (4.6 to 5.9)
Glucose rate of change 20 minutes post bolus delivery (mmol/l per hour)	1.8 (0.3 to 2.6)	0.6 (-0.1 to 2.0)

\* Between 23h00 and 7h00.