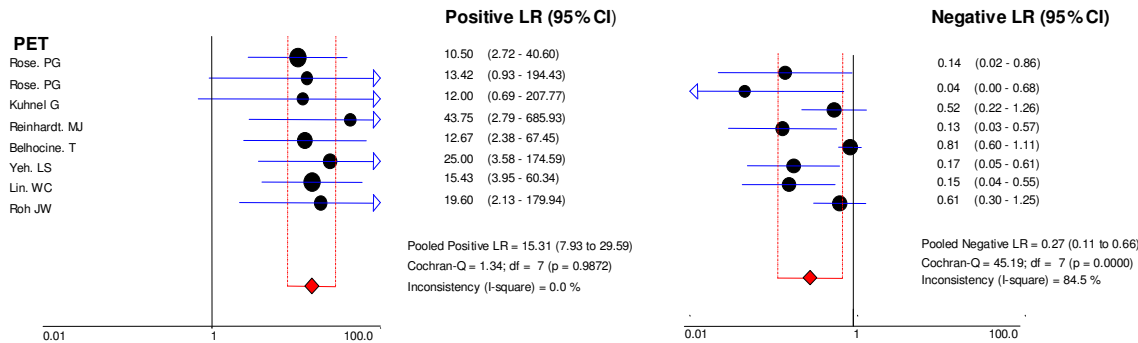
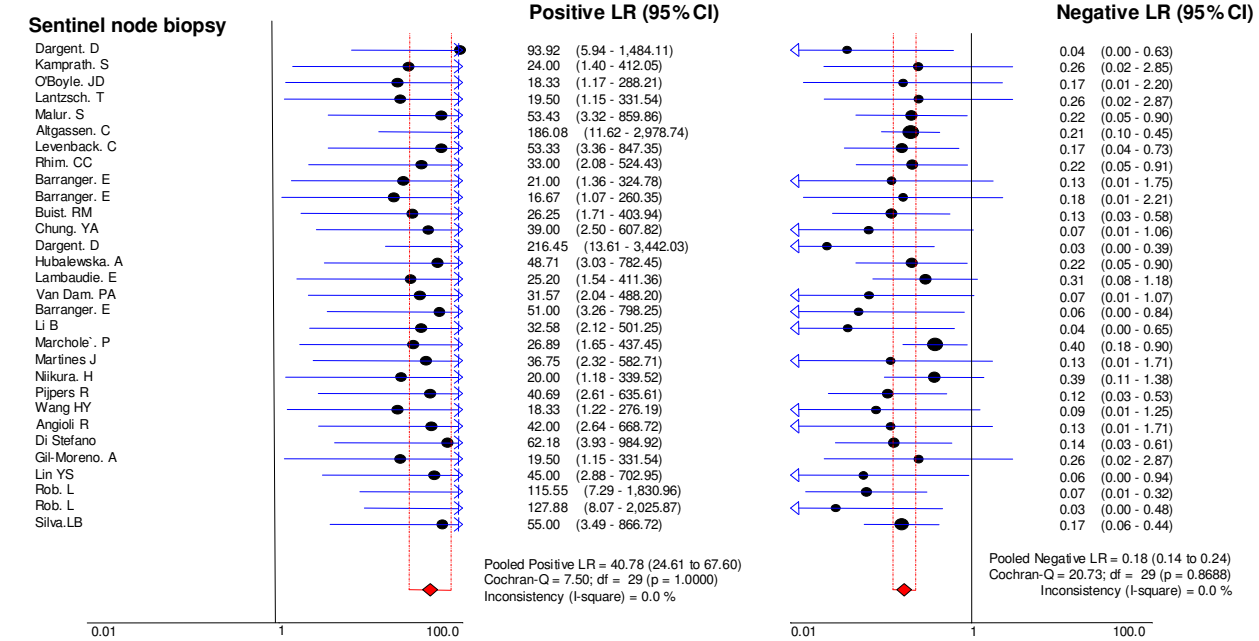
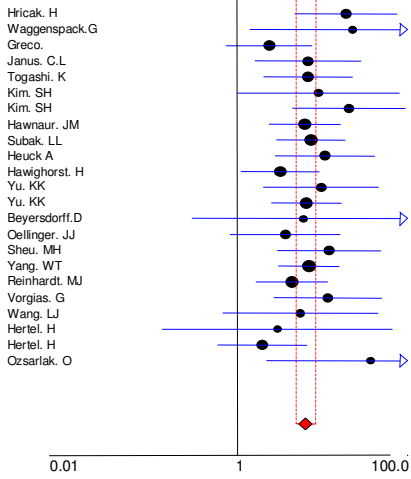


**Appendix 4:** Pooled positive likelihood ratios and pooled negative likelihood ratios for studies on the diagnostic accuracy of sentinel node biopsy, positron emission tomography, magnetic resonance imaging and computed tomography in the detection of lymph node status in primary cervical cancer. Sentinel node biopsy was the most accurate index test, followed by positron emission tomography. Note: there is a discrepancy between the number of studies included in the forest plots and the number of studies included in Figure 1 because  $2 \times 2$  tables with no positive results could not be used in the calculations.



**MRI**



**Positive LR (95% CI)**

Author	LR (95% CI)
Hricak, H	18.82 (4.72 - 75.08)
Waggenspack, G	22.50 (1.42 - 356.96)
Greco	2.38 (0.75 - 7.56)
Janus, C.L	6.75 (1.63 - 28.03)
Togashi, K	6.80 (2.06 - 22.42)
Kim, SH	9.00 (1.01 - 80.13)
Kim, SH	20.40 (4.46 - 93.38)
Hawnaur, JM	6.19 (2.37 - 16.18)
Subak, LL	7.33 (2.91 - 18.46)
Heuck, A	10.67 (2.80 - 40.61)
Hawighorst, H	3.19 (1.12 - 9.11)
Yu, KK	9.67 (2.03 - 45.93)
Yu, KK	6.49 (2.52 - 16.70)
Beyersdorff, D	6.00 (0.29 - 122.36)
Oellinger, JJ	3.65 (0.83 - 16.06)
Sheu, MH	12.00 (2.98 - 48.35)
Yang, WT	6.94 (3.06 - 15.73)
Reinhardt, MJ	4.36 (1.66 - 11.45)
Vorgias, G	11.56 (2.71 - 49.34)
Wang, LJ	5.50 (0.68 - 44.44)
Hertel, H	2.95 (0.13 - 65.78)
Hertel, H	1.96 (0.59 - 6.52)
Ozsarlak, O	36.40 (2.20 - 601.21)

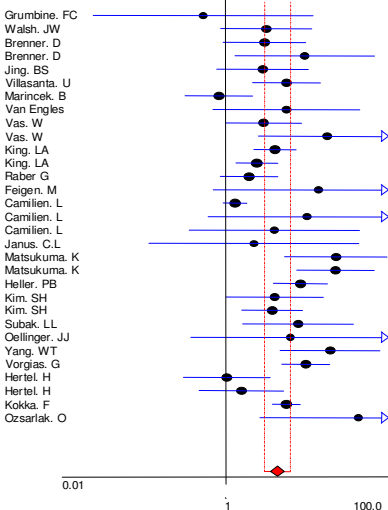
Pooled Positive LR = 6.37 (4.86 to 8.34)  
 Cochran-Q = 13.11; df = 22 (p = 0.6367)  
 Inconsistency (I-square) = 0.0 %

**Negative LR (95% CI)**

Author	LR (95% CI)
Hricak, H	0.19 (0.05 - 0.67)
Waggenspack, G	0.26 (0.06 - 1.04)
Greco	0.74 (0.43 - 1.29)
Janus, C.L	0.28 (0.05 - 1.55)
Togashi, K	0.44 (0.20 - 0.94)
Kim, SH	0.82 (0.63 - 1.06)
Kim, SH	0.77 (0.62 - 0.94)
Hawnaur, JM	0.28 (0.12 - 0.67)
Subak, LL	0.39 (0.19 - 0.79)
Heuck, A	0.12 (0.03 - 0.45)
Hawighorst, H	0.40 (0.20 - 0.82)
Yu, KK	0.36 (0.07 - 1.78)
Yu, KK	0.40 (0.18 - 0.89)
Beyersdorff, D	0.74 (0.41 - 1.33)
Oellinger, JJ	0.69 (0.44 - 1.09)
Sheu, MH	0.35 (0.17 - 0.73)
Yang, WT	0.33 (0.16 - 0.69)
Reinhardt, MJ	0.33 (0.12 - 0.87)
Vorgias, G	0.40 (0.16 - 0.97)
Wang, LJ	0.71 (0.32 - 1.59)
Hertel, H	0.95 (0.77 - 1.17)
Hertel, H	0.86 (0.61 - 1.21)
Ozsarlak, O	0.31 (0.08 - 1.17)

Pooled Negative LR = 0.50 (0.39 to 0.64)  
 Cochran-Q = 95.90; df = 22 (p = 0.0000)  
 Inconsistency (I-square) = 77.1 %

**CT**



**Positive LR (95% CI)**

Author	LR (95% CI)
Grumbine, FC	0.53 (0.02 - 11.86)
Walsh, JW	3.15 (0.87 - 11.42)
Brenner, D	3.00 (0.93 - 9.65)
Brenner, D	9.33 (1.30 - 67.03)
Jing, BS	2.86 (0.79 - 10.36)
Villasanta, U	5.58 (2.14 - 14.53)
Marinsek, B	0.83 (0.32 - 2.15)
Van Engles	5.57 (0.70 - 44.08)
Vas, W	2.92 (1.00 - 8.52)
Vas, W	17.50 (2.54 - 120.49)
King, LA	4.02 (2.23 - 7.27)
King, LA	2.42 (1.34 - 4.35)
Raber, G	1.94 (0.86 - 4.36)
Feigen, M	13.75 (0.71 - 266.31)
Camilien, L	1.30 (0.93 - 1.81)
Camilien, L	10.00 (0.61 - 162.66)
Camilien, L	3.96 (0.36 - 43.70)
Janus, C.L	2.22 (0.11 - 42.96)
Matsukuma, K	22.50 (5.32 - 95.15)
Matsukuma, K	22.32 (7.47 - 66.73)
Heller, PB	8.26 (3.86 - 17.70)
Kim, SH	4.00 (1.01 - 15.87)
Kim, SH	3.71 (1.57 - 8.78)
Subak, LL	7.75 (1.63 - 36.92)
Oellinger, JJ	6.22 (0.38 - 102.94)
Yang, WT	19.09 (4.68 - 77.93)
Vorgias, G	9.60 (4.88 - 18.87)
Hertel, H	1.03 (0.30 - 3.51)
Hertel, H	1.56 (0.48 - 5.14)
Kokka, F	5.54 (3.72 - 8.25)
Ozsarlak, O	42.25 (2.66 - 670.99)

Pooled Positive LR = 4.31 (2.98 to 6.23)  
 Cochran-Q = 112.45; df = 30 (p = 0.0000)  
 Inconsistency (I-square) = 73.3 %

**Negative LR (95% CI)**

Author	LR (95% CI)
Grumbine, FC	1.05 (0.85 - 1.30)
Walsh, JW	0.39 (0.14 - 1.06)
Brenner, D	0.23 (0.02 - 2.99)
Brenner, D	0.36 (0.11 - 1.12)
Jing, BS	0.38 (0.11 - 1.31)
Villasanta, U	0.27 (0.10 - 0.73)
Marinsek, B	1.25 (0.41 - 3.77)
Van Engles	0.62 (0.32 - 1.20)
Vas, W	0.48 (0.24 - 0.95)
Vas, W	0.18 (0.05 - 0.62)
King, LA	0.20 (0.11 - 0.37)
King, LA	0.63 (0.45 - 0.88)
Raber, G	0.81 (0.58 - 1.11)
Feigen, M	0.80 (0.60 - 1.08)
Camilien, L	0.10 (0.01 - 0.90)
Camilien, L	0.40 (0.11 - 1.44)
Camilien, L	0.01 (0.00 - 0.23)
Janus, C.L	0.90 (0.53 - 1.52)
Matsukuma, K	0.30 (0.09 - 0.95)
Matsukuma, K	0.75 (0.57 - 0.98)
Heller, PB	0.68 (0.57 - 0.82)
Kim, SH	0.79 (0.57 - 1.08)
Kim, SH	0.81 (0.66 - 1.00)
Subak, LL	0.53 (0.24 - 1.20)
Oellinger, JJ	0.65 (0.38 - 1.13)
Yang, WT	0.37 (0.19 - 0.70)
Vorgias, G	0.43 (0.30 - 0.61)
Hertel, H	0.99 (0.80 - 1.23)
Hertel, H	0.92 (0.72 - 1.19)
Kokka, F	0.41 (0.30 - 0.58)
Ozsarlak, O	0.19 (0.05 - 0.81)

Pooled Negative LR = 0.58 (0.48 to 0.70)  
 Cochran-Q = 147.29; df = 30 (p = 0.0000)  
 Inconsistency (I-square) = 79.6 %