

CLINICAL VISTAS BRIEFS

What's your call?



A 70-year-old otherwise healthy man presented with a 1-year history of these 2 gradually enlarging asymptomatic lesions over the right thigh.



Drum-stick-like congenital lesion measuring 20 × 2 × 8 cm in the umbilical region of an asymptomatic 5-day-old boy born at term.



A 50-year-old man with a history of gout presented with a tender, swollen, red great toe of 2 weeks' duration.

See page 740 for diagnoses.

CLINICAL VISTAS BRIEFS

Bowen disease

Bowen disease is most commonly found in white patients over 60 years old. Other risk factors include chronic sun exposure, immunosuppression, arsenic exposure and cutaneous human papillomavirus (HPV) infection. HPV types 16, 18, 34 and 48 cause Bowen disease at genital sites; the role of HPV in nongenital cases of Bowen disease is less well defined. HPV types 2, 16, 34 and 35 have been rarely identified within nongenital lesions.

The lesions occur on mucous or cutaneous surfaces exposed to the sun (hands, head, neck) as a solitary, asymptomatic, sharply demarcated, scaly and erythematous plaque, measuring from a few millimetres to several centimetres in diameter (Fig. 1). The lesions may be fissured or verrucous or, rarely, pigmented. Ulceration may occur and is often a sign that invasive disease is developing. The lesion extends progressively in an annular or polycyclic pattern. The risk of progression of Bowen disease to invasive carcinoma is about 3%.¹

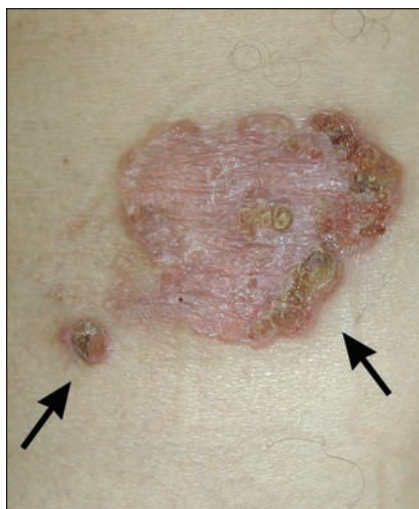


Fig. 1: The 2 lesions (arrows) with their well-defined and erythematous areas, and central and peripheral crusts and erosions were biopsied. Histology (images are available online at www.cmaj.ca/cgi/content/full/175/7/739/DC1) demonstrated changes consistent with squamous cell carcinoma in situ, or Bowen disease, with no dermal invasion.

The differential diagnosis includes superficial basal cell carcinoma, psoriasis and eczema, which can be differentiated histopathologically.

Treatment options are broad and include surgical excision, curettage and electrodesiccation, cryotherapy, topical administration of 5-fluorouracil, imiquimod, photodynamic therapy and CO₂ laser therapy. The choice of treatment depends on the size, location and accessibility of these therapies.

Nadia Akhdari

Said Amal

Department of Dermatology

Salwa Ettalbi

Department of Plastic Surgery

MedVI University Hospital

Guéliz, Marrakech

Morocco

REFERENCE

1. Cox NH, Eedy DJ, Morton CA. Guidelines for management of Bowen's disease. *Br J Dermatol* 1999; 141:633-41.

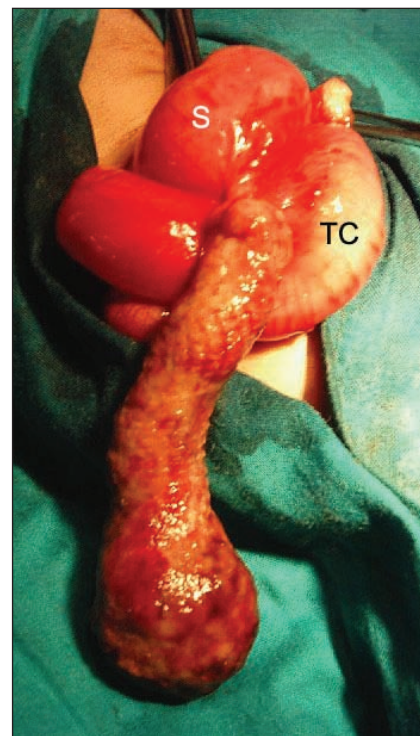
DOI:10.1503/cmaj.060223

Gastroenteric duplication cyst

The child was born in a rural hospital in Nigeria. His mother had an unremarkable pregnancy and normal vaginal delivery. She was well and reported taking only routine prenatal vitamins with folic acid and supplements of iron and vitamin B complex. There was no family history of congenital malformations. No antenatal ultrasonography was done during the pregnancy.

The mass was present since birth. The boy was ultimately brought to our children's emergency department at 5 days of age for assessment. His parents were uneducated and very poor, which probably accounted for the delay in their following up the referral for surgical consultation. The boy was otherwise well, in no distress, with an

unremarkable examination except for the umbilical hernial mass. The mass protruded from the umbilical ring to the left of the umbilical stump. A provisional diagnosis of gastroschisis was made.



Intraoperatively, however, the mass was noted to have no connections to the stomach, transverse colon or umbilical ring. Instead, it was found to arise from the omentum between the greater curvature of the stomach (S) and the transverse colon (TC) (Fig. 1). The mass was excised and was found to contain a thick, gelatinous, greenish-yellow substance (see Appendix 1, available online at www.cmaj.ca/cgi/content/full/175/7/739-a/DC1). Histopathology confirmed smooth-muscle lining of the cyst wall and mucinous glands (see Appendix 2, available at www.cmaj.ca/cgi/content/full/175/7/739-a/DC1). A gastroenteric duplication cyst was confirmed. The child did well postoperatively.

Gastroenteric duplication cysts are rare malformations that vary in location, size, appearance and symptoms. Although recognized since 1733, it was not until 1937 that Ladd¹ intro-

duced the term “duplication of the intestinal tract” to describe a group of congenital anomalies that share 3 characteristics: they have a well-developed coat of smooth muscle, their epithelial lining represents some part of the alimentary tract, and they are attached to some part of the alimentary tract. Duplications are either cystic or tubular in shape. The anomalies are more common in males than in females. Although this was not the case for our patient, gastroenteric duplication cysts can sometimes cause gastric outlet obstructions.

Martin A. Nzegwu
Okechukwu C. Okafor
Daniel Olusina

Department of Morbid Anatomy
Sabatein O. Ekenze
Department of Pediatric Surgery
University of Nigeria Teaching
Hospital
Enugu, Nigeria

REFERENCE

1. Ladd WC. Duplication of the alimentary tract. *South Med J* 1937;30:363.

DOI:10.1503/cmaj.060159

Atraumatic fracture of proximal first phalanx

The patient was found to have a normal uric acid level but an elevated random glucose level (17 mmol/L, normal 3.9–6.1 mmol/L). Type 2 diabetes was diagnosed. The patient then admitted to a 7-year history of diabetes, with little treatment, and was found to have bilateral peripheral neuropathy and decreased sensation in his feet. He had no history of trauma that he could recall. The patient also admitted to drinking up



to 5 drinks of alcohol a day for several years, a risk factor for neuroarthropathy.¹

The differential diagnosis for an acute monoarthritis of the first phalangeal joint includes gout, pseudogout, infection, osteomyelitis, cellulitis, trauma and fracture. Besides fracture, other common diabetic foot lesions include osteolysis, osteoporosis, osteosclerosis, juxta-articular defects of the cortical bone, new bone formation and sclerosis of the shaft, ischemic bone necrosis, subluxation and neuropathic arthropathy.

A radiograph of the patient's foot revealed a fracture in the first phalanx (Fig. 1, arrow). The patient responded well to 4 weeks of casting and oral antihypertensive and hypoglycemic therapy.

Matthias Bramkamp
Mark Schärer

Department of Internal Medicine
University Hospital of Zurich
Zurich, Switzerland

REFERENCE

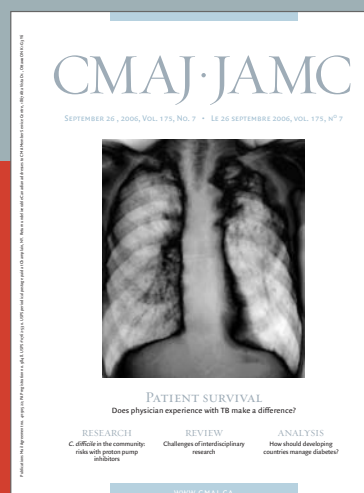
1. Bjorkengren AG, Weisman M, Pathria MN, et al. Neuroarthropathy associated with chronic alcoholism. *AJ R Am J Roentgenol* 1988;151:743-5.

DOI:10.1503/cmaj.060599

The complete picture on research.

**PRACTICAL. RELEVANT. CMAJ IS NOW
MORE COMPREHENSIVE THAN EVER.**

CMAJ's reputation and wide Canadian and international reach make it THE place to publish leading Canadian research. CMAJ publishes important peer-reviewed research within weeks of submission and ranks fifth among international general medical journals by impact factor, a measure of the scientific importance of a journal.



The essential read.™