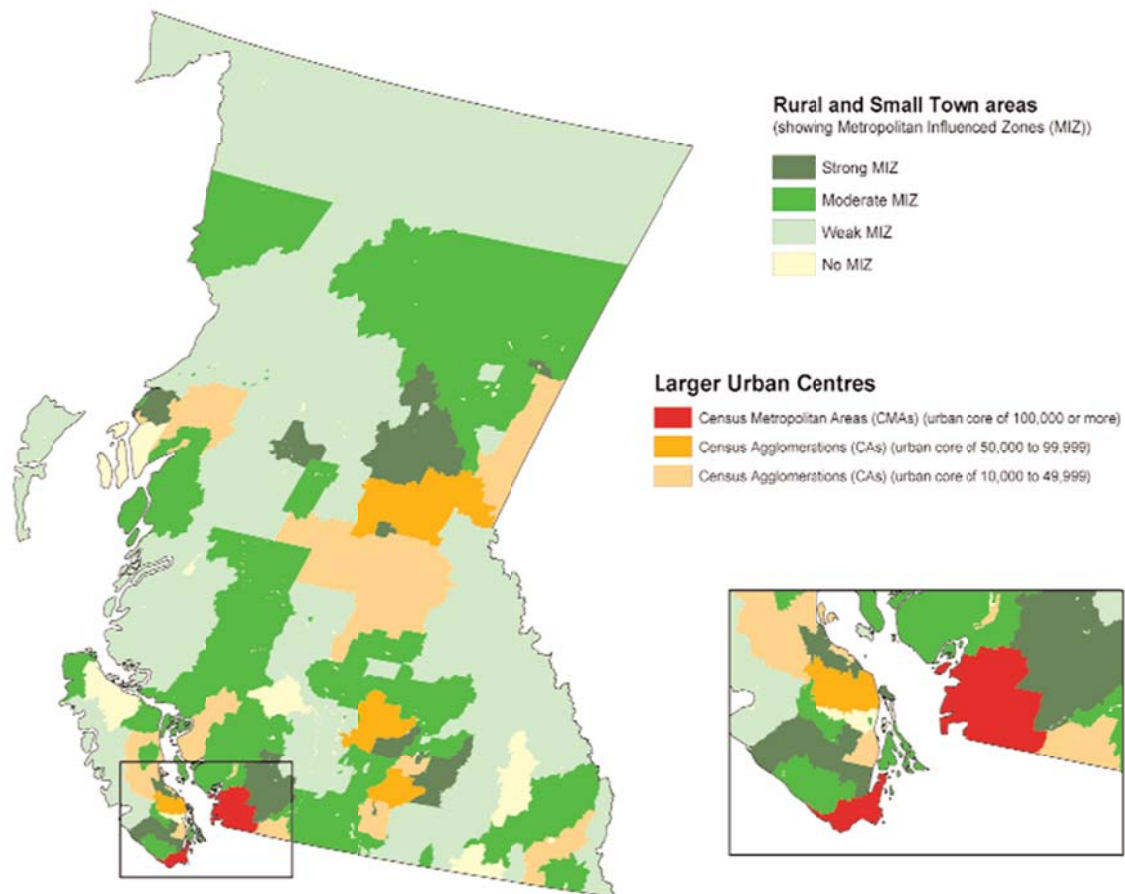


Appendix 3 (as supplied by the authors): Urban and rural areas defined by metropolitan influenced zones (MIZ) in British Columbia.



Adapted from Statistics Canada; custom maps developed by Spatial Analysis and Geomatics Applications, Agriculture Division, 2004. Based on the Statistics Canada Census of Population, 2001.<sup>44</sup>  
Note: all tertiary level hospitals are located in Census Metropolitan Areas