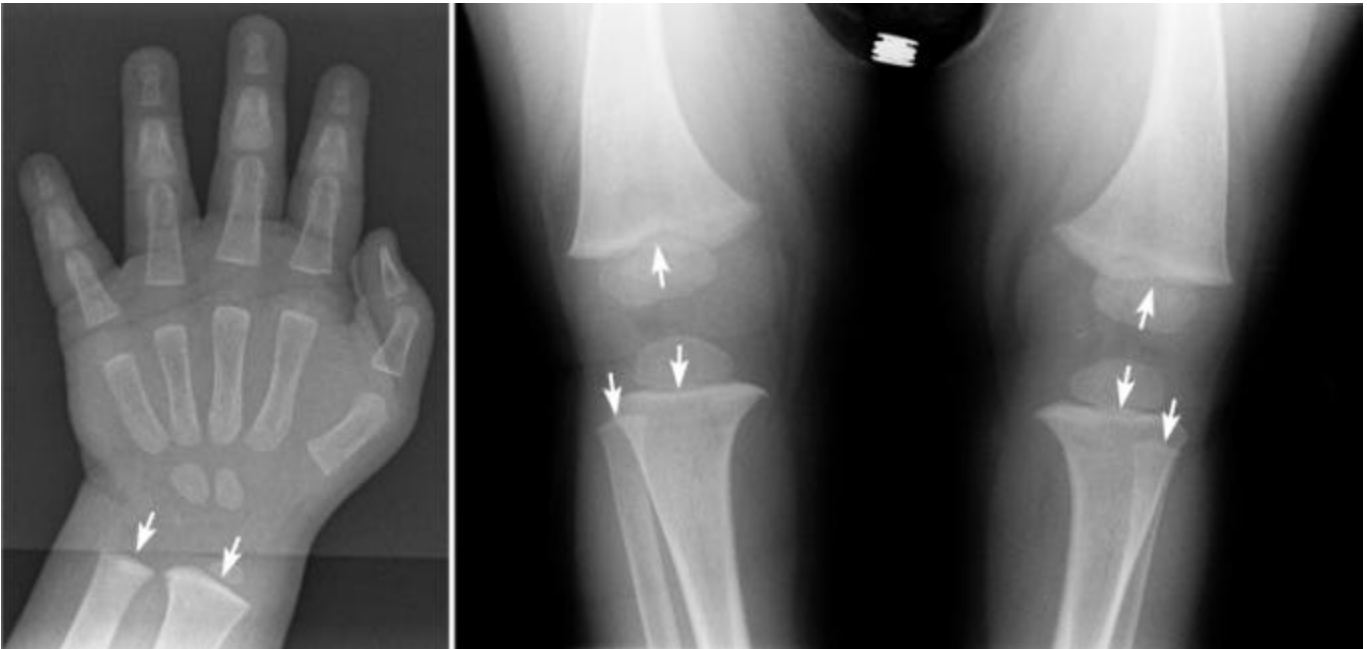




Radiographs of a 13-month-old boy of African descent, revealing widening, fraying, cupping and irregularity of the metaphyseal border of his distal radius and ulna, with osteomalacia of his long bones.



After 3 months of oral dietary supplementation with high-dose vitamin D₃ and calcium gluconate, the metaphyseal abnormalities appear to have resolved.