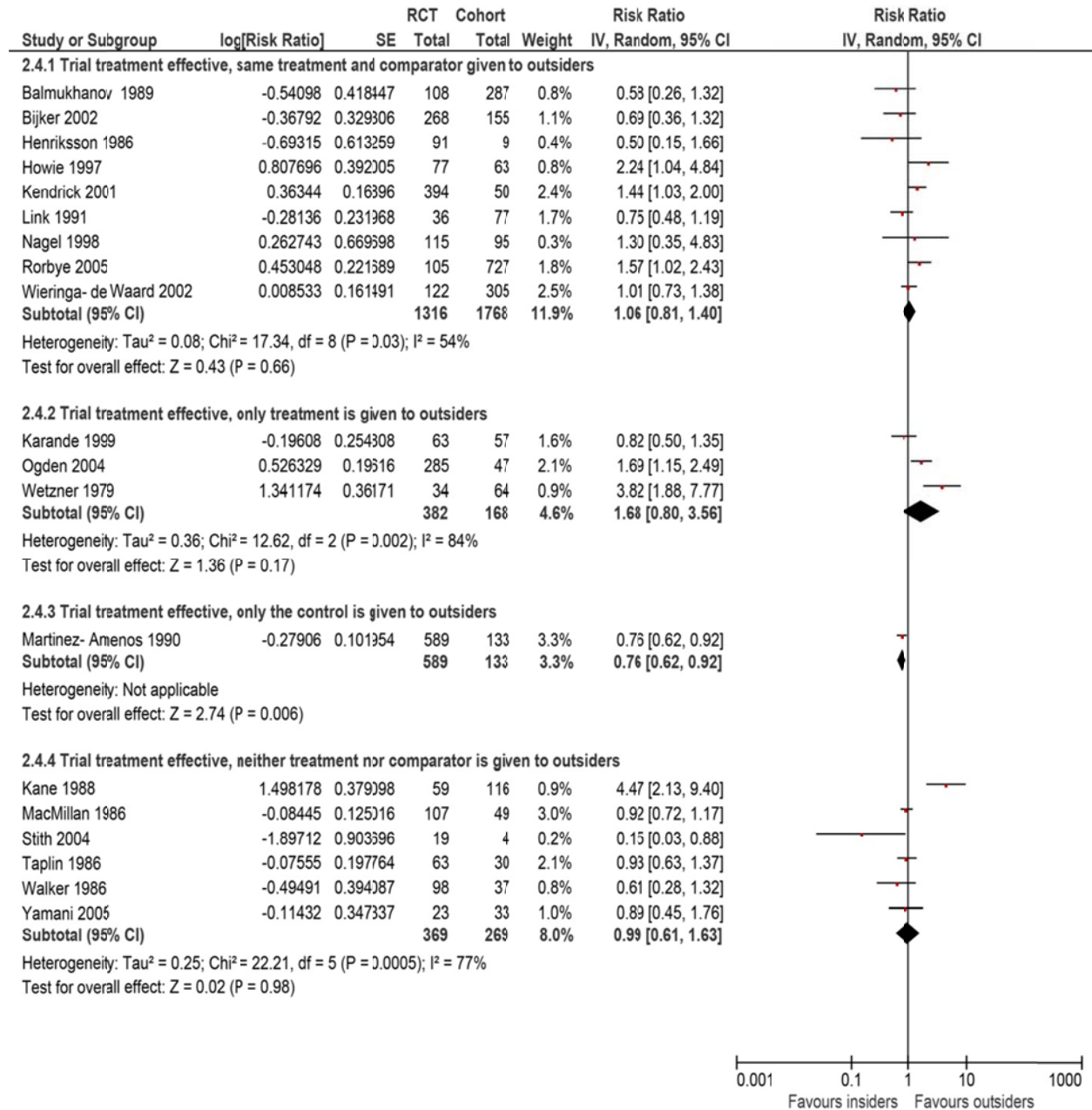
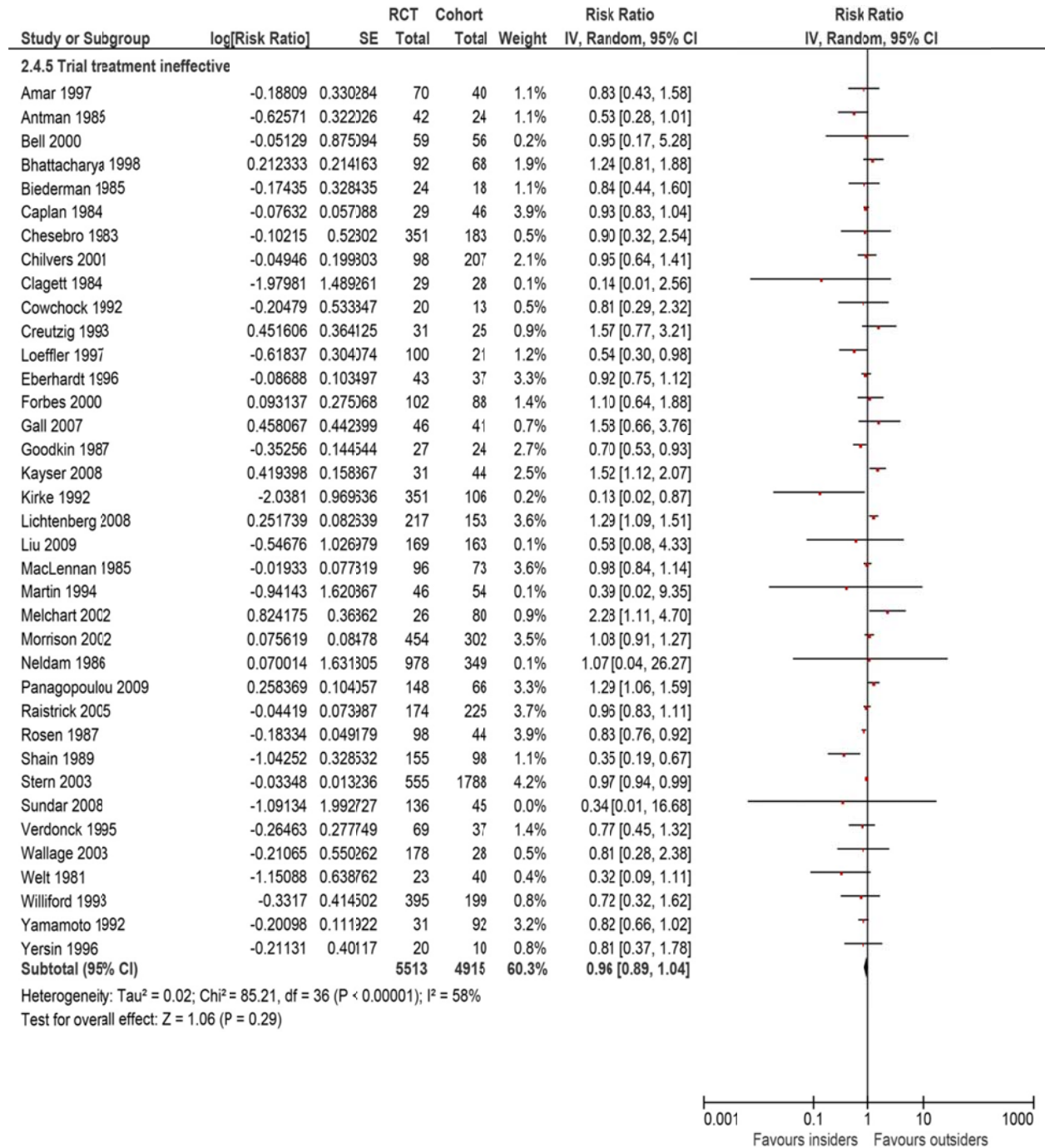


Appendix 3 (as supplied by the authors): Meta-analyses for randomized controlled trials (RCTs) with dichotomous nonmortality outcomes, without randomization of potential participants as “insiders” (participating in the RCT) v. “outsiders” (not participating in the RCT); subgroups are based on effectiveness of trial treatment. Values less than 1.0 indicate that being an “insider” is favoured. CI = confidence interval, SE = standard error. For reference details, see the reference list in the main article.



Appendix 3 (continued)



Appendix 3 (continued)

